



# ESA Update

Chris Evans – ESA HST Project Scientist

Space Telescope Users Committee: May 9, 2023

# Multi-mission partnership with STScI



## HST

- Over three decades of successful collaboration on Hubble
- ESA Science Programme Committee approved extension to 2026 (indicative to 2029)
- 13 ESA-funded personnel supporting all aspects of Hubble science operations at STScI



## JWST

- ESA transition to science operations, handover of European contributions and responsibilities (Oct 2022)
- 15 ESA-funded personnel supporting Webb science operations at STScI





The ESA Office at STScI includes:

- ESA staff at STScI assigned to HST & JWST (& future ESA-NASA missions operated @STScI)
- ESA/AURA personnel and admins contracted for ESA through AURA
- ESA Research Fellows
- Recruitment underway for ESA/AURA positions (deadline May 10)

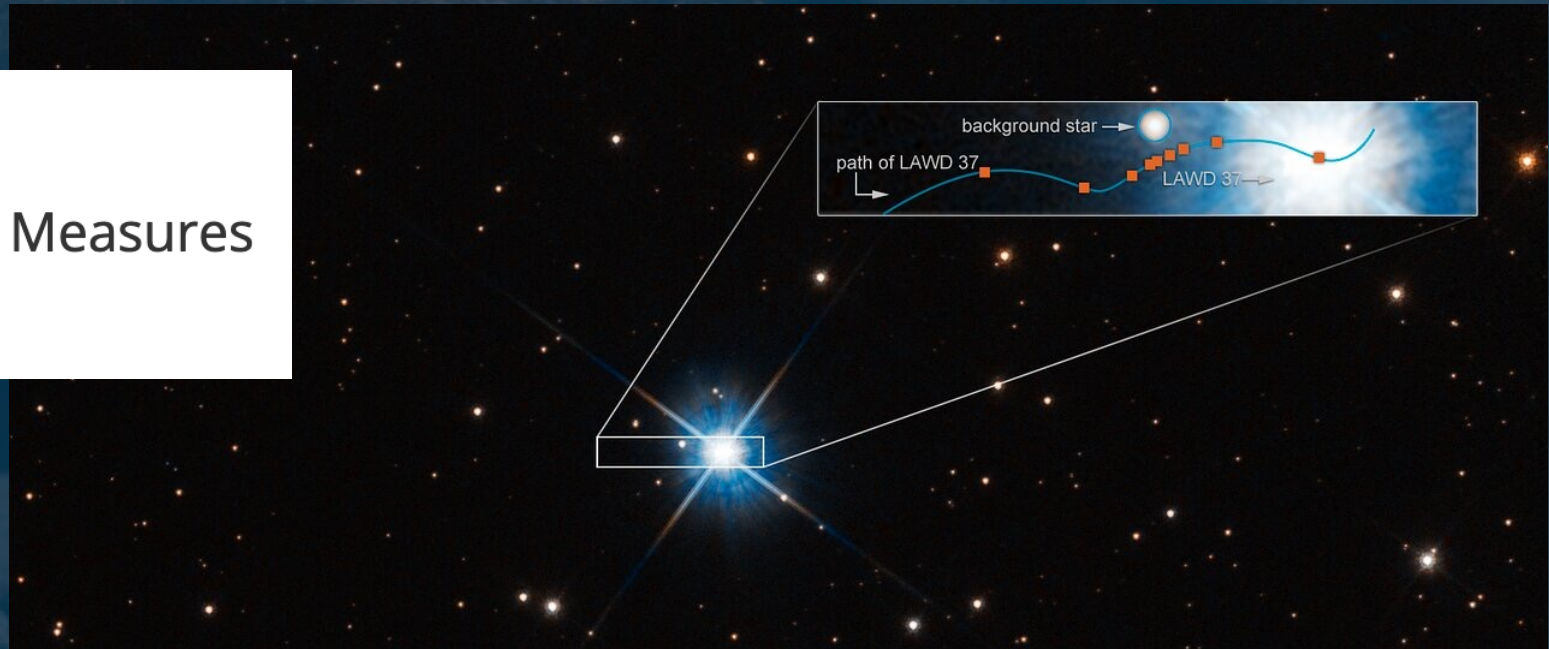
The ESA Office leads the HST and JWST outreach in Europe

- Activities and material planned in close coordination with STScI's OPO and NASA
- Range of social media to amplify releases and engage the public
- Working with ESA Comms to highlight connections to other ESA missions

heic2301 — Science Release

## For The First Time Hubble Directly Measures The Mass of a Lone White Dwarf

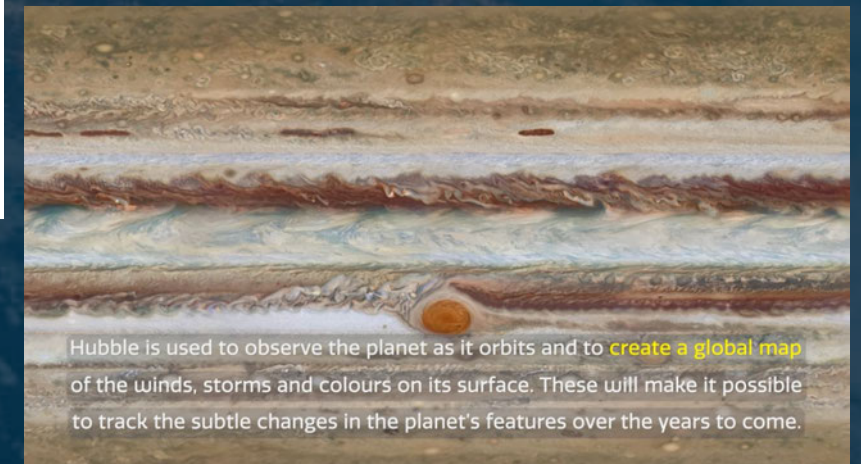
2 February 2023





Hubble's 33<sup>rd</sup> launch anniversary celebrated shortly after ESA JUICE launch

- Released a new ESA/Hubble 'Space Sparks' highlighting Hubble's studies of Jupiter

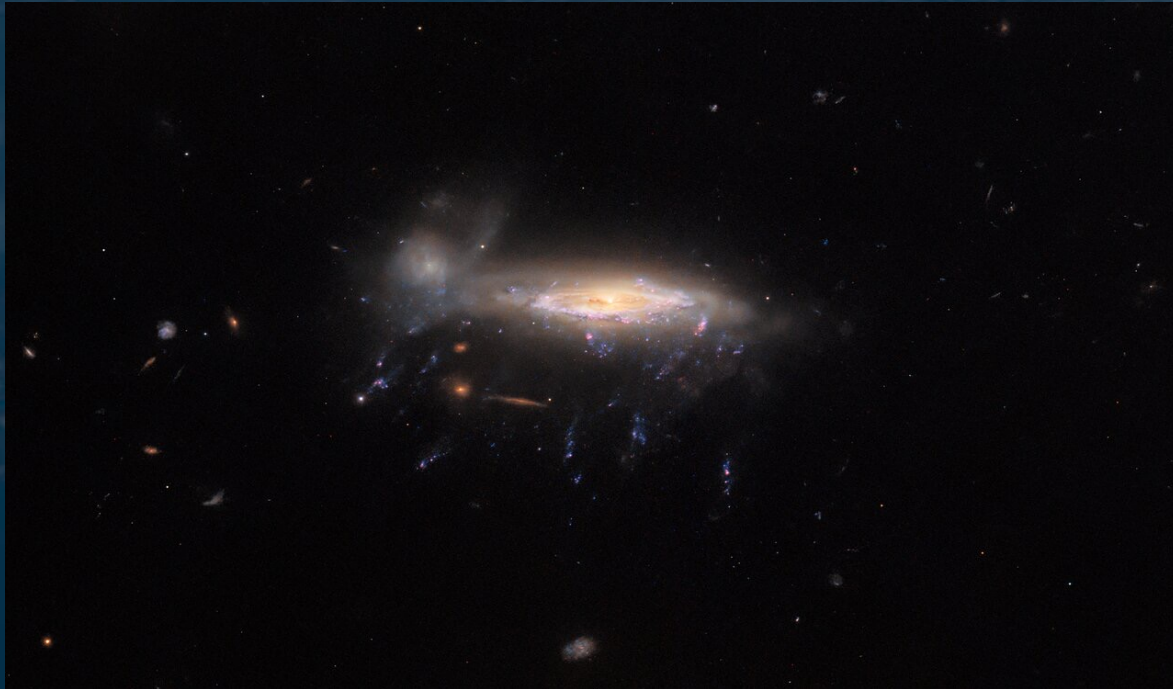


Hubble is used to observe the planet as it orbits and to **create a global map** of the winds, storms and colours on its surface. These will make it possible to track the subtle changes in the planet's features over the years to come.



## Long-running Picture of the Week series

- Reprocessed images from the archives
- Recent mini-series of ‘Jellyfish’ galaxies



Credits: ESA/Hubble & NASA, M. Gullieuszik and the GASP team




Galaxies from Gullieuszik et al. (2023) & Giunchi et al. (2023)



All outreach images included and easily accessible in ESASky

### Coordinates

Position (RA): 23 36 26.66  
Position (Dec): 21° 8' 43.50"  
Field of view: 2.70 x 2.26 arcminutes  
Orientation: North is 65.5° right of vertical



View in ESASky:



J2000 23 36 43.390 +21 10 29.07 FoV: 8.1' X 4.2' DSS2 color

Sci. Mode En

Search...

### ESA/Hubble Outreach Images

Hide Footprints

Object Name	Title
filter column...	filter column...
Outside Field of View (2147 images)	
In Field of View (1 images)	
IC 5337	Portrait of a galactic jellyfish

Rows: 2148

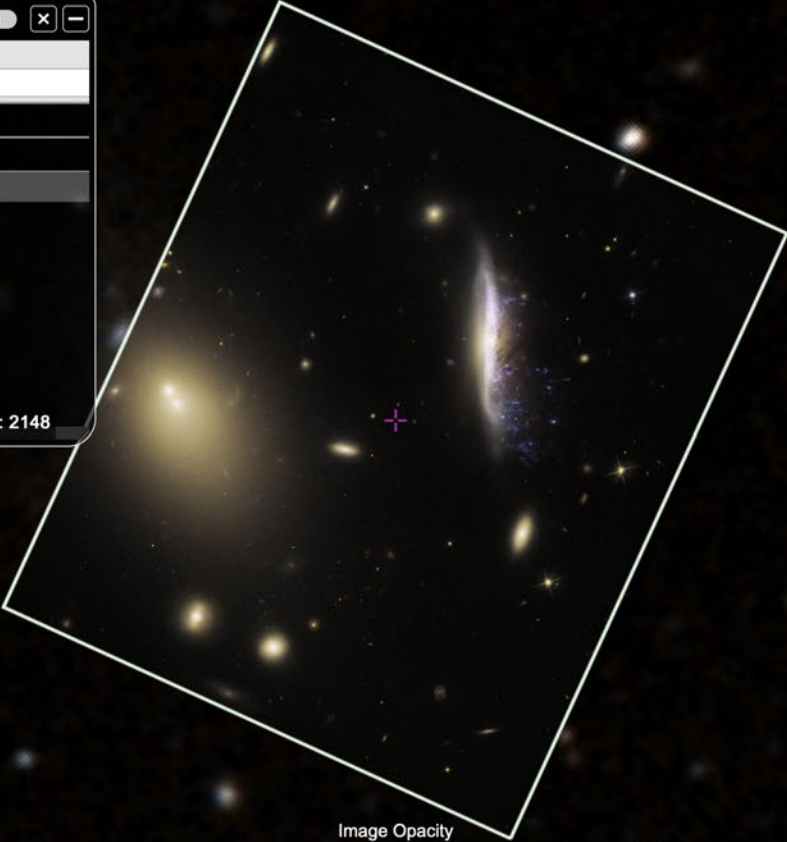


Image Opacity

### Portrait of a galactic jellyfish

The galaxy JW100 features prominently in this image from the NASA/ESA Hubble Space Telescope, with streams of star-forming gas dripping from the disc of the galaxy like streaks of fresh paint. These tendrils of bright gas are formed by a process called ram pressure stripping, and their resemblance to dangling tentacles has led astronomers to refer to JW100 as a 'jellyfish' galaxy. It is located in the constellation Pegasus, over 800 million light-years away. Ram pressure stripping occurs when ga...

Show More



## Recent topics:

- General news & updates
- Retrospective of 2022 science highlights
- Release of 2023 Hubble & Webb Calendar
- Announcement of new eHST archive
- Plans for 2023 EAS meeting (Poland, July)
- Reflections from outgoing JSTUC member





## New version of eHST science archive:

- New user interface & query tools to optimise searches
- Seamless integration with ESASky (ESA's multi-mission visualisation interface)
- New viewer for quick-look inspection of FITS images
- Access to observing proposals and DOIs of publications from each programme
- Enhanced filtering of metadata and data products

