

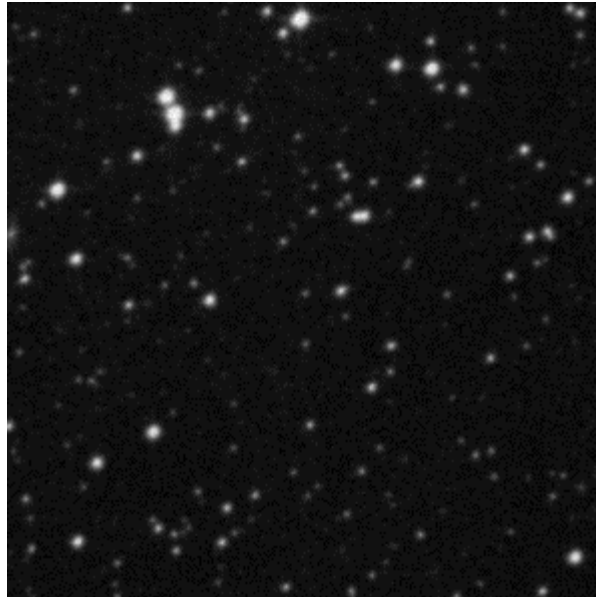
Southern LSPM Targets

$$18^h < RA < 24^h$$

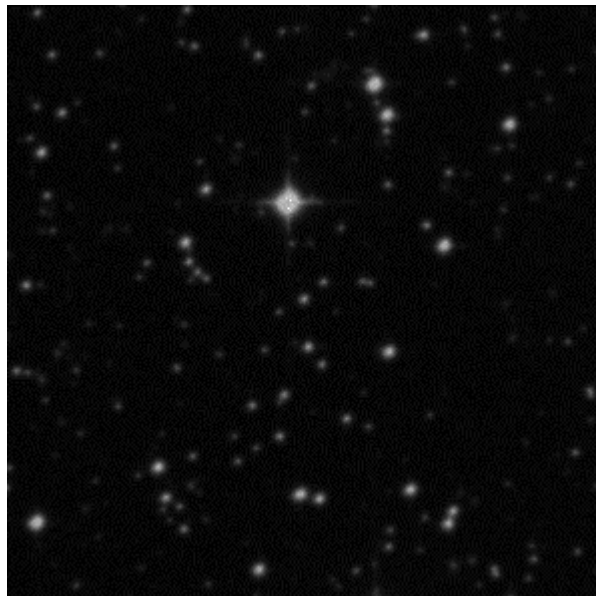
Finding charts for stars with $V > 15$

Target star is centred in each 5x5 arc-minute finding chart; charts from R-band UKST plates (DSS)

	name	RA (2000)	Dec	V	Exp	Pri	T
STSCI-07b-09	1 PM 62209	18 21 46.2	-61 1 54	19.36	4x 600	1	29



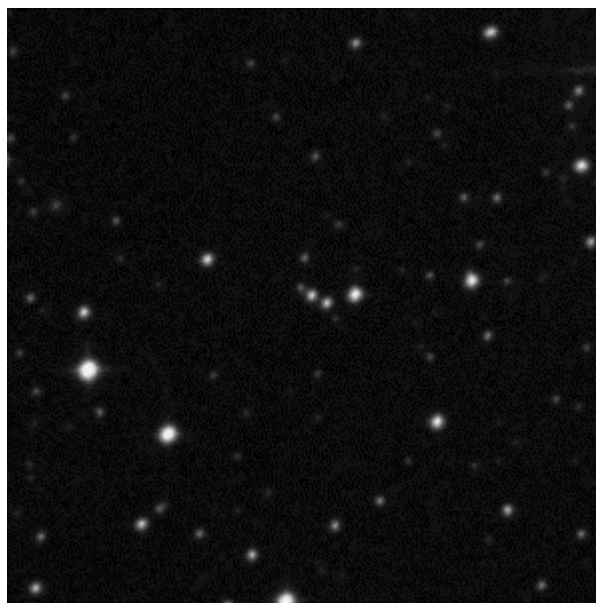
STSCI-07b-09	1 PM 62211	18 26 46.8	-65 42 39	17.31	2x 600	1	29
--------------	------------	------------	-----------	-------	--------	---	----



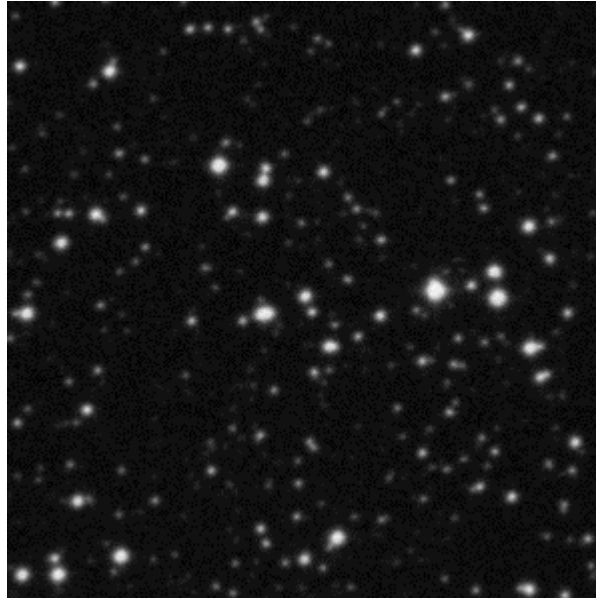
STSCI-07b-09 1 PM 62212 18 42 40.7 -62 25 21 17.69 2x 600 1 29



STSCI-07b-09 1 PM 62214 18 55 47.9 -69 14 15 16.49 1x 600 1 19



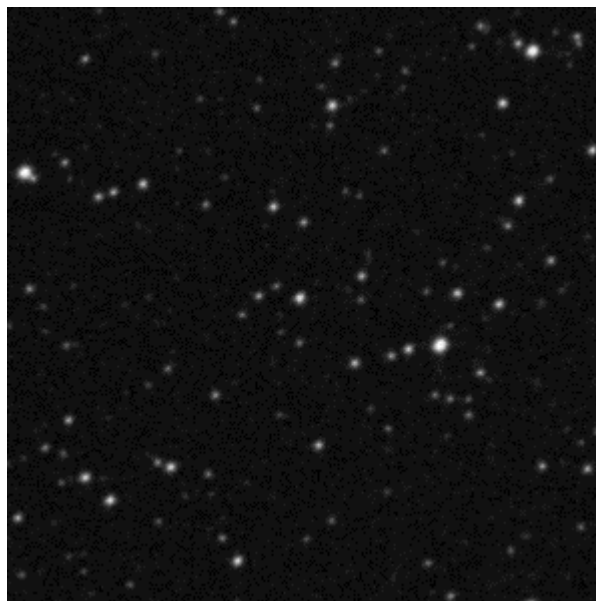
STSCI-07b-09 1 PM 62216 18 56 59.2 -40 11 41 16.12 1x 600 1 19



STSCI-07b-09 1 PM 62218 18 58 16.2 -58 44 56 16.00 1x 600 1 19



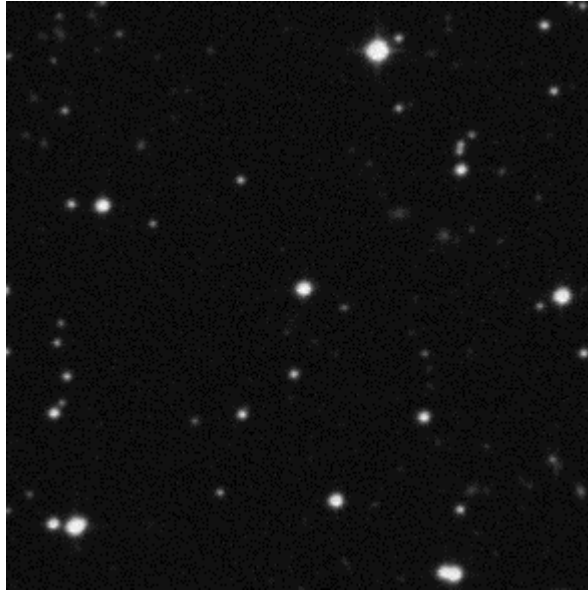
STSCI-07b-09 1 PM 62220 19 18 29.5 -45 54 30 17.57 3x 600 1 29



STSCI-07b-09 1 PM 62221 19 32 48.7 -50 5 38 15.79 1x 600 1 19



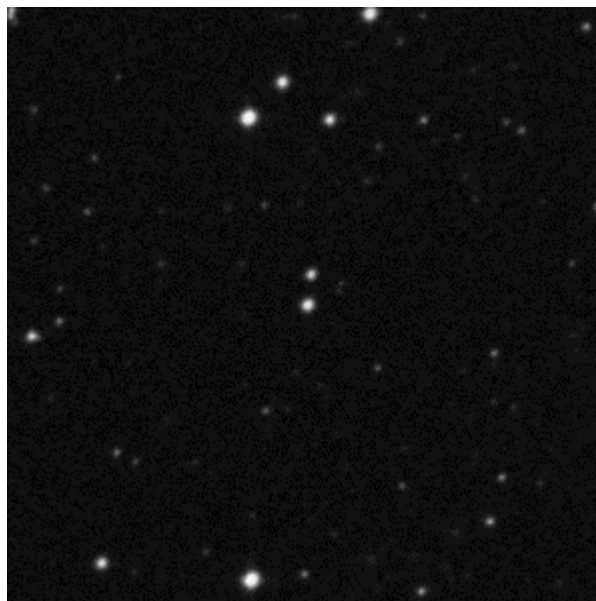
STSCI-07b-09 1 PM 62225 19 59 58.8 -55 49 29 15.15 1x 300 1 14



STSCI-07b-09 1 PM 62230 20 14 35.4 -54 30 58 15.31 1x 300 1 14



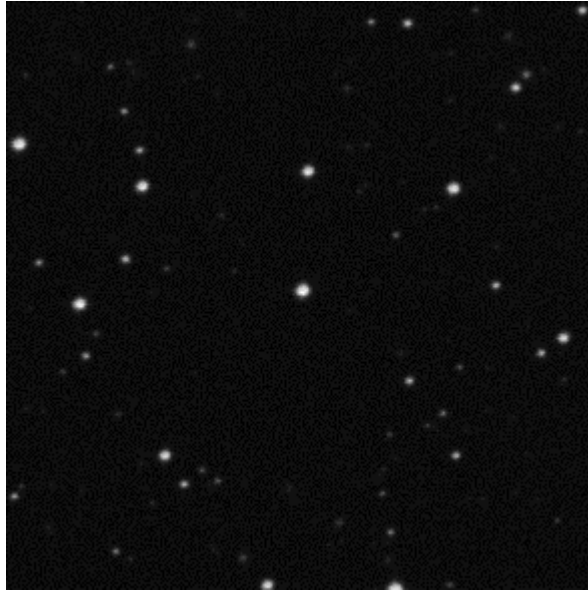
STSCI-07b-09 1 PM 62231 20 16 11.2 -75 31 4 15.69 1x 600 1 19



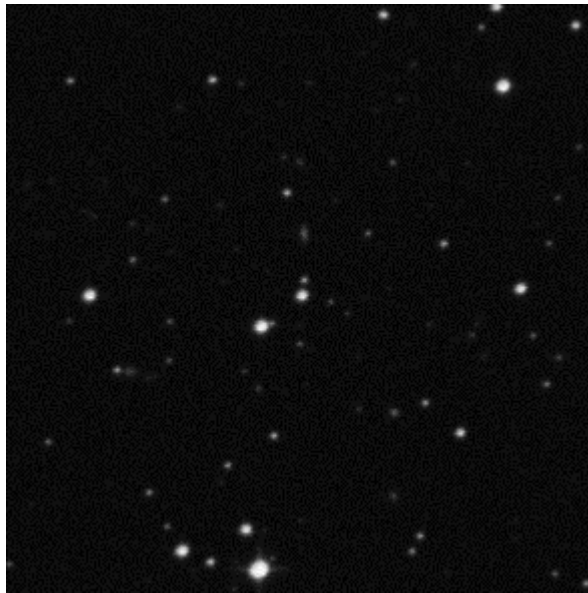
STSCI-07b-09 1 PM 62232 20 19 49.8 -58 16 43 17.59 3x 600 1 42



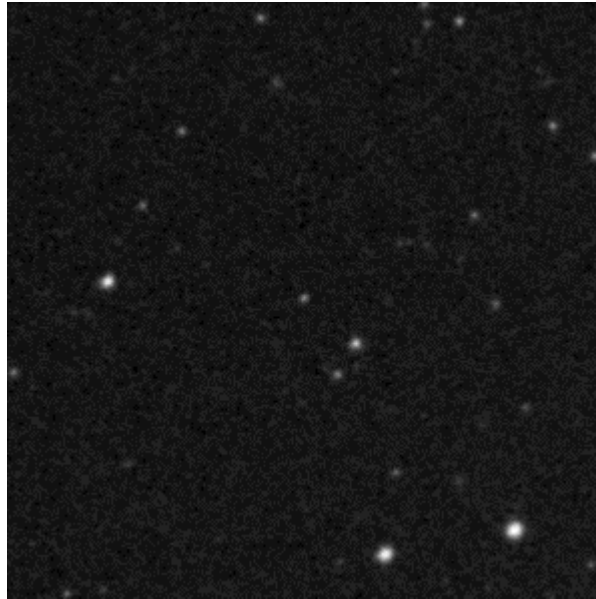
STSCI-07b-09 1 PM 62234 20 33 1.9 -49 3 10 15.08 1x 300 1 14



STSCI-07b-09 1 PM 62235 20 39 10.0 -51 36 9 17.52 3x 600 1 42



STSCI-07b-09 1 PM 62246 21 28 4.8 -65 10 49 18.46 3x 600 1 42



STSCI-07b-09 1 PM 62247 21 31 28.6 -41 44 52 18.88 3x 600 1 29



STSCI-07b-09 1 PM 62248 21 34 22.3 -43 16 10 16.08 1x 600 1 19



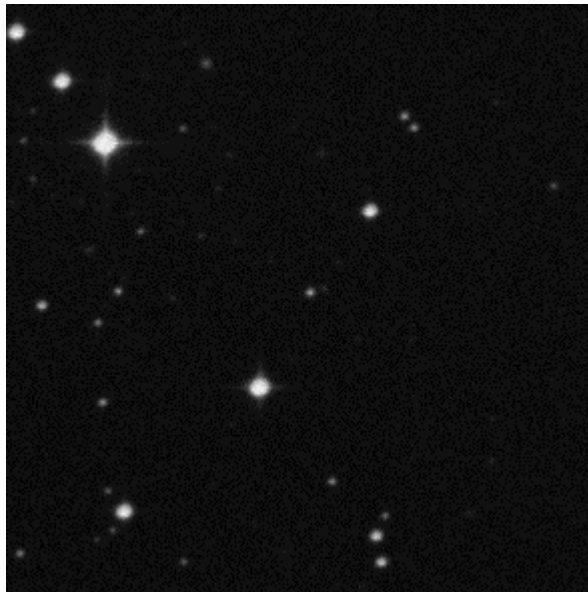
STSCI-07b-09 1 PM 62249 21 35 39.6 -53 25 31 16.19 1x 600 1 19



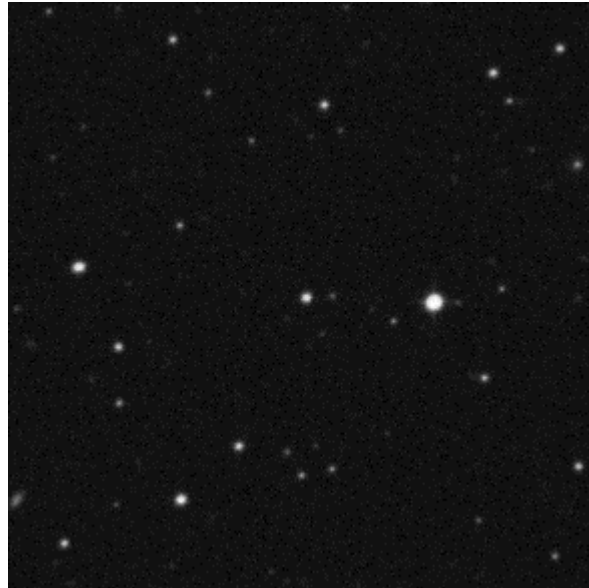
STSCI-07b-09 1 PM 62251 21 40 8.5 -57 39 25 17.52 2x 600 1 29



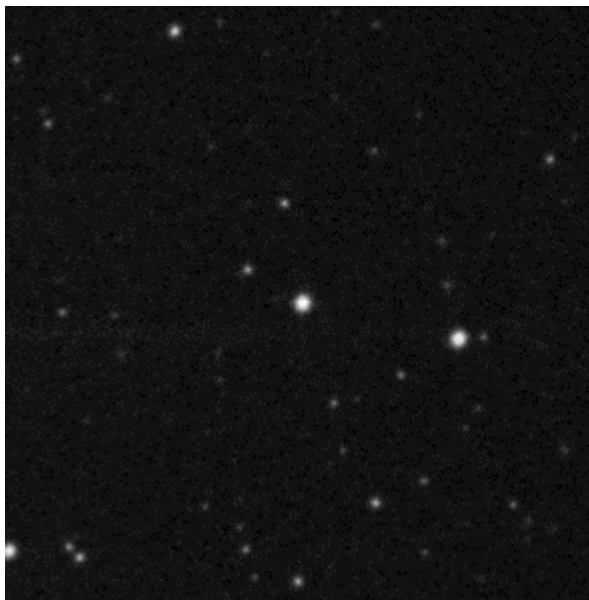
STSCI-07b-09 1 PM 62252 21 51 31.4 -40 17 23 17.10 2x 600 1 29



STSCI-07b-09 1 PM 62255 22 13 50.5 -63 42 10 16.82 2x 600 1 29



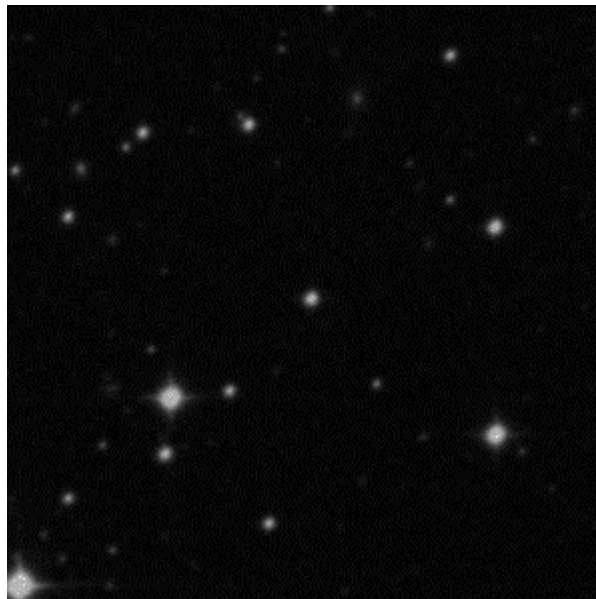
STSCI-07b-09 1 PM 62256 22 22 43.5 -72 15 44 15.22 1x 300 1 14



STSCI-07b-09 1 PM 62257 22 53 50.9 -71 28 7 16.37 1x 600 1 19



STSCI-07b-09 1 PM 62260 23 11 34.6 -75 6 39 15.28 1x 300 1 14



STSCI-07b-09 1 PM 62263 23 36 0.4 -48 30 33 17.04 2x 600 1 29



STSCI-07b-09 1 PM 62266 23 45 25.7 -40 20 15 15.40 1x 300 1 14

