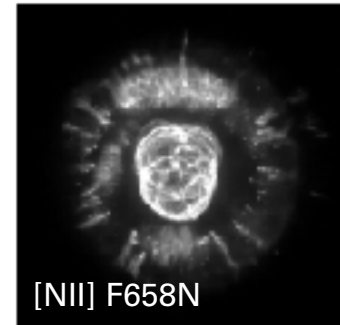
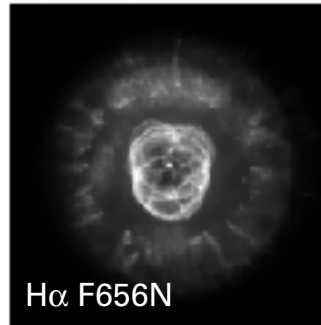
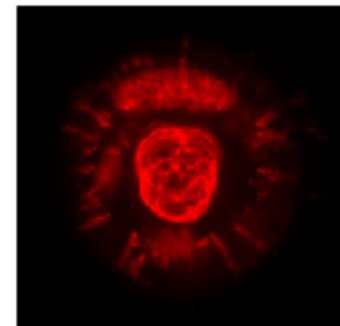
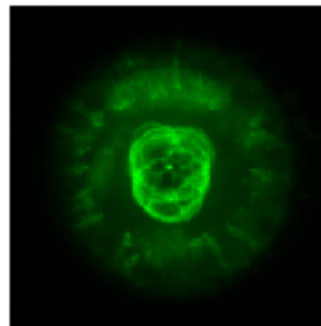
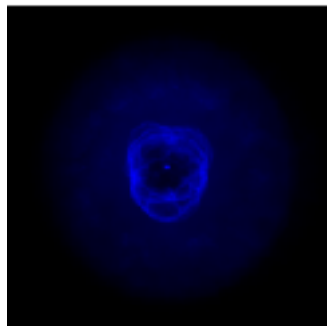
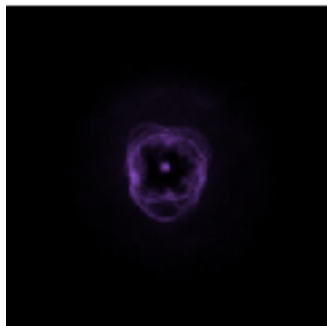


# Combining separate exposures to produce a color image

## Separate filter images



## Grayscale



## Colorized

## Resulting color composite



Separate images are exposed through different color filters. The resulting black and white or "grayscale" images are assigned a color that can be viewed or reproduced (that may or may not be the color of the filter used for the exposure). The separate images are combined in color image "channels" that together produce a full range of hues.

Using filters that match the eye's response can result in a natural or "true" color image. Otherwise, the colors are enhanced or shifted from what we would be able to see.