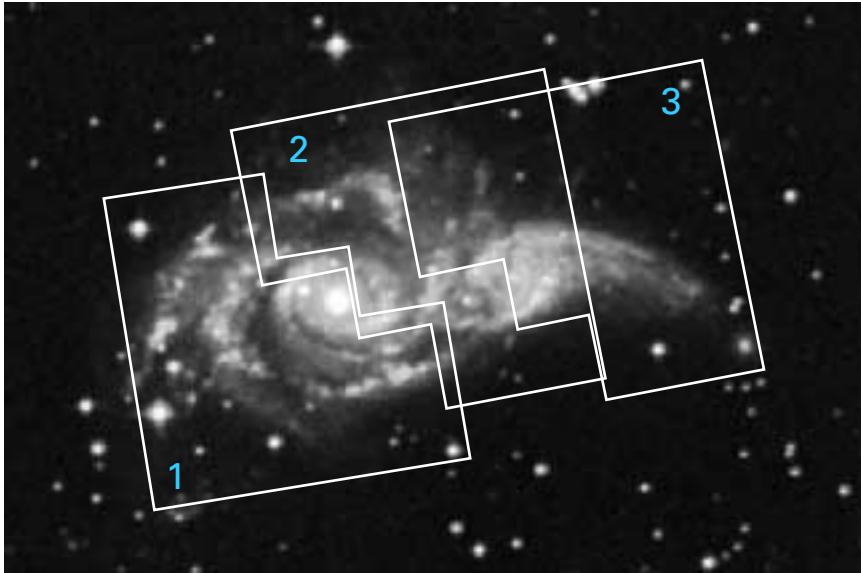


Combining multiple images to produce a wider field

Ground-based image with location of WFPC2 pointings



The relatively narrow field of view of the WFPC2 camera means that many targets overflow the image. Several carefully aimed exposures ("pointings") may be used to cover the image but must be combined afterward.

Overlapping areas can be cut around or combined. The resulting images retain the resolution of the individual WFPC2 fields.

WFPC2 images from separate pointings



Resulting composite panorama

