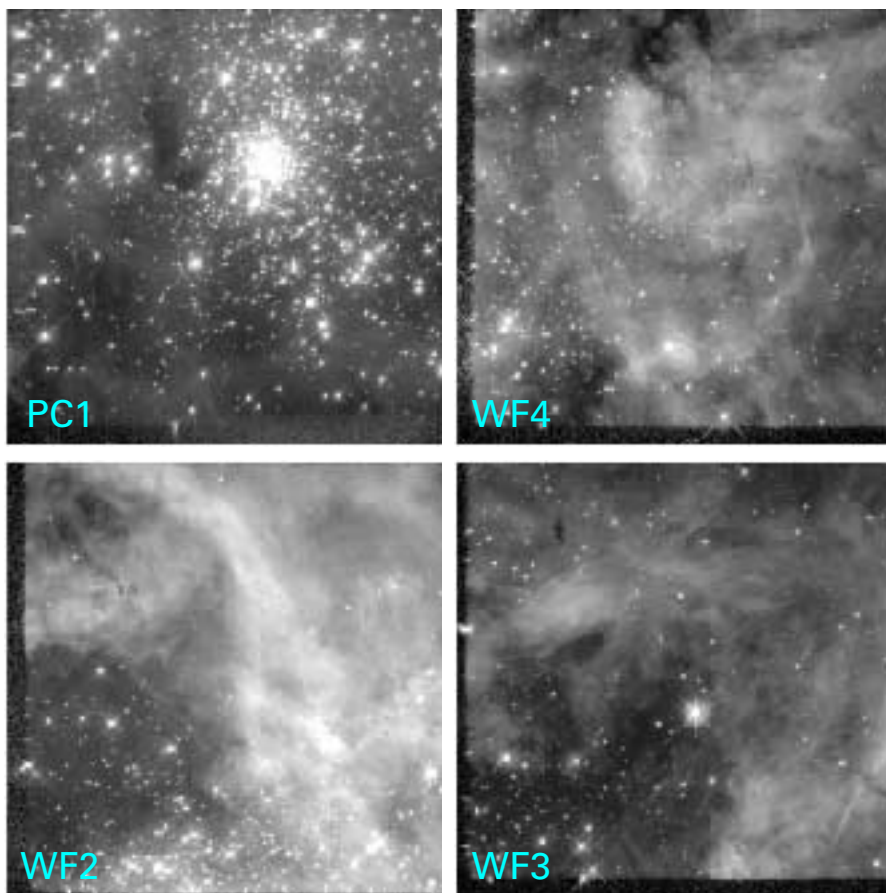
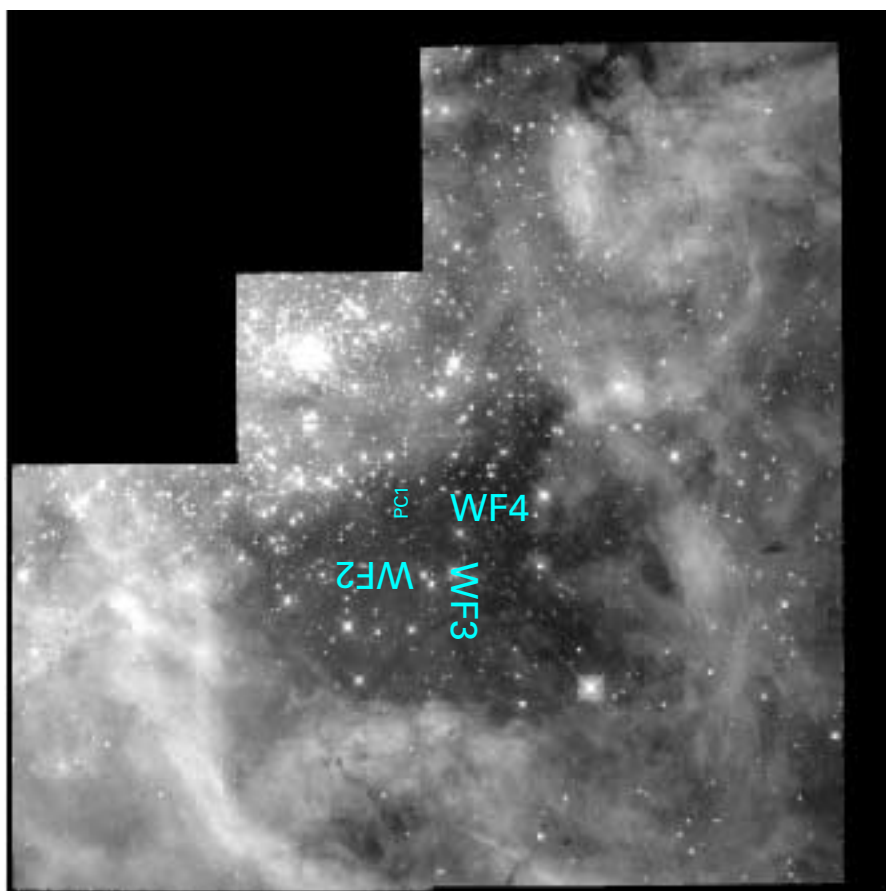


# WFPC2 consists of four cameras



Individual WFPC2 Chips



Mosaic Image

HST's WFPC2 instrument contains four CCD detectors ("chips"), each producing an image 800x800 pixels. Three "wide-field" (WF) chips have a field of view of 2.5 minutes of arc. The fourth "planetary camera" (PC) chip sees an adjacent, narrower field of 35 seconds.

Because of the optical path, the resulting images are rotated with respect to each other. The separate images must be rotated and scaled to the same pixel scale before being combined into a mosaic.

The fields overlap somewhat but "seams" remain in the resulting mosaic images.