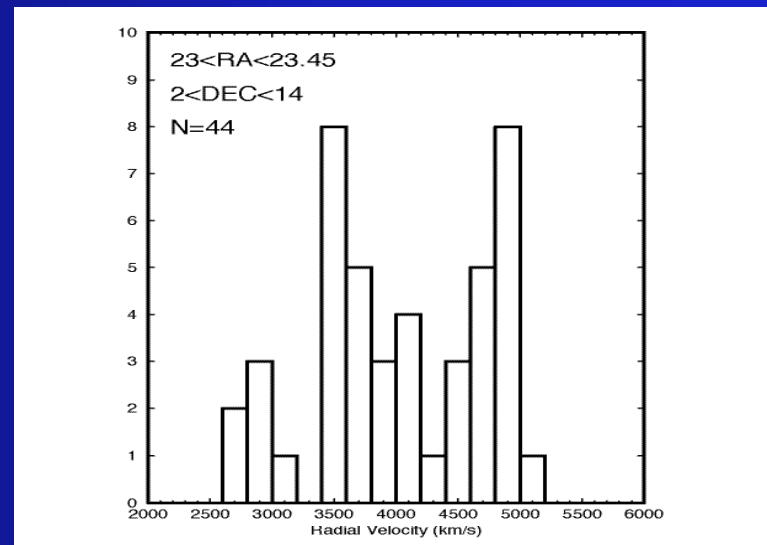
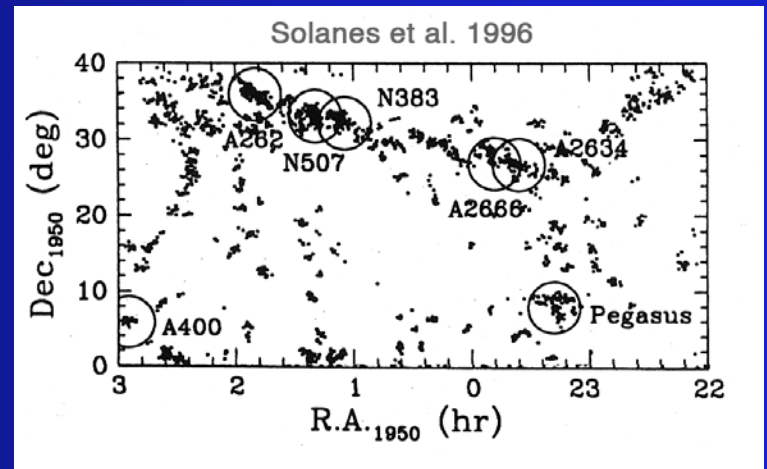
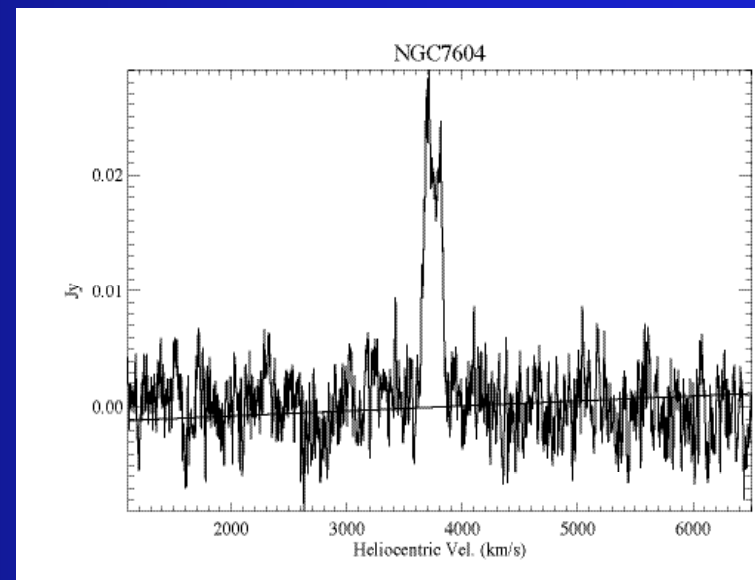
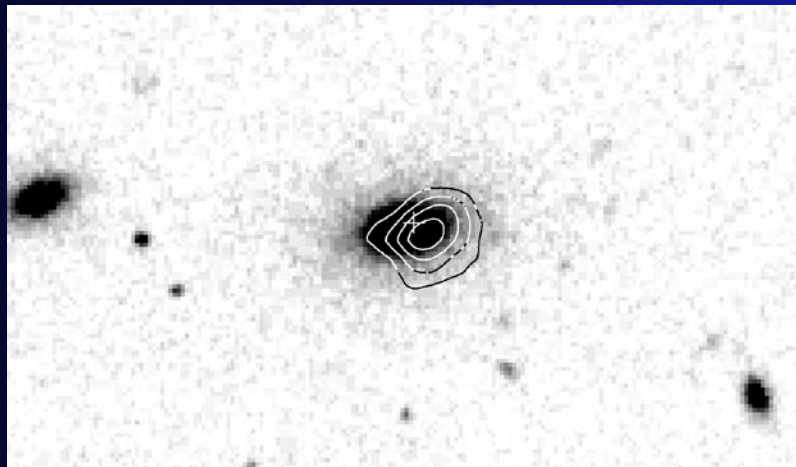
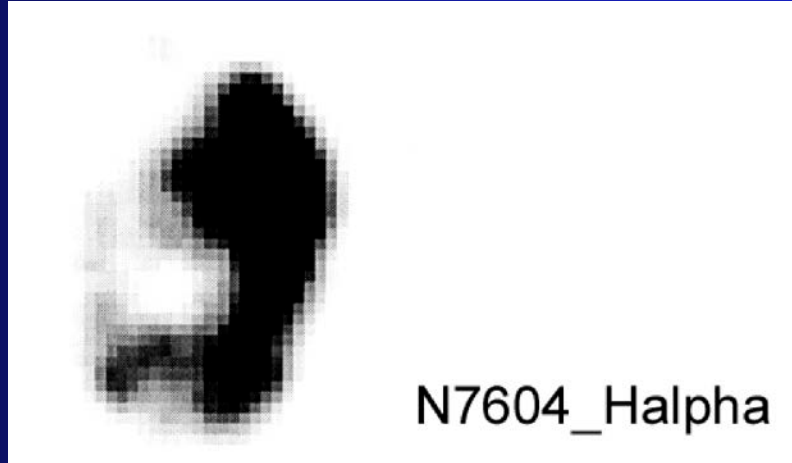


Pegasus I

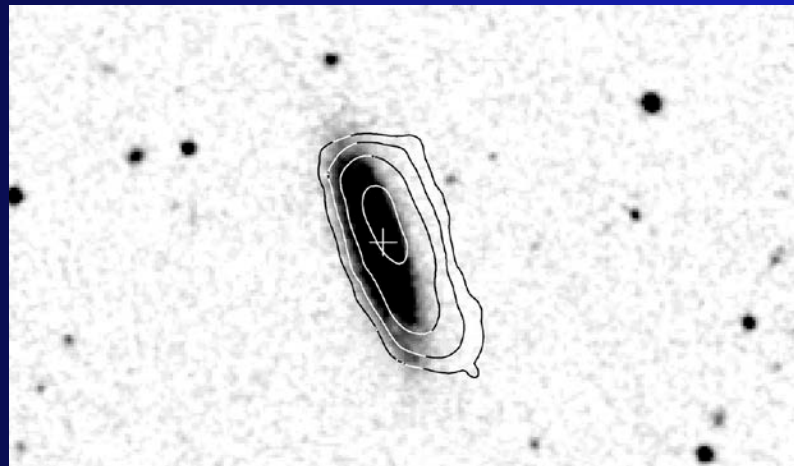
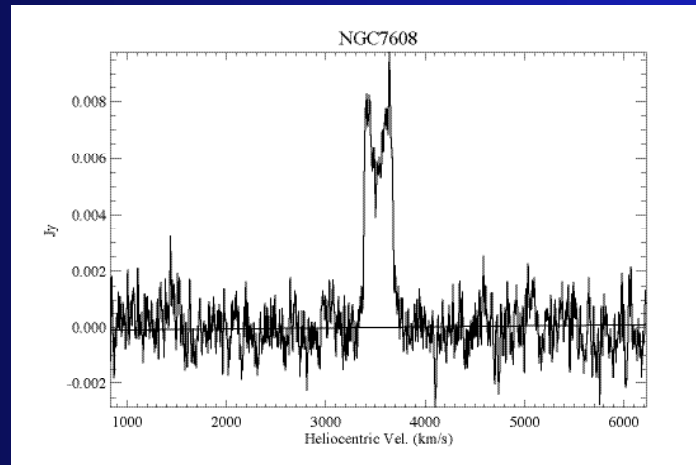
- Located near Pisces-Perseus supercluster.
- Situated between a foreground and background cluster.
- Spiral-rich cluster, virtually undetectable x-ray emission, and low velocity dispersion.
 - $v=240$ km/s (l.o.s)
- Pram is 50x smaller than F/A: ram pressure stripping should not be occurring



NGC 7604



NGC 7608



NGC 7615

