



STScI | SPACE TELESCOPE
SCIENCE INSTITUTE

EXPANDING THE FRONTIERS OF SPACE ASTRONOMY

JWST Cycle 5: Peer Review Results

Science Policy Division

Space Telescope Science Institute

March 2026



Results Package Overview

- Summary of Submissions
- Executive Summary of Review Recommendations
- Recommended Executive Committee and Medium Proposals
- Summary Statistics and Charts
- Initiatives and Special Proposal Categories
- Compliance Violations
- Cycle 5 Resource Recommendations
- Investigator Statistics



JWST Cycle 5 Proposal Review Schedule

Date	Milestone
August 1, 2025	Cycle 5 Call for Proposals released
October 15, 2025 at 8 PM EDT	Cycle 5 Proposal Deadline
November 5 & 6, 2025	Discussion Panelist Orientation & External Panelist Orientation
November 12, 2025	Proposals released to reviewers for review and grading
January 9, 2026	Deadline for Preliminary Grades
January 13, 2026	Executive Committee Orientation
Mid Jan 2026	Release of Panel Reading Lists
February 2 – 6, 2026	Telescope Allocation Committee Panels: Monday – Thursday: Galactic Panels, Tuesday – Friday: Extragalactic Panels
February 9 - 12, 2026	Telescope Allocation Committee EC Meetings: Galactic: Monday and Tuesday / Extragalactic: Wednesday and Thursday
March 5, 2026	Director's Review
Mid-end March 2026	Release of Science Program
July 1, 2026	Cycle 5 Science Start



Submissions



Submissions

- The JWST Cycle 5 GO/AR deadline was on October 15, 2025 at 8:00 pm EDT.
 - A total of 2,942 submissions were received by this date (including deadline extension placeholders)
 - 6 additional proposals were submitted after the deadline and automatically rejected (not included in the 2,942 above).
 - 40 proposals with resubmission after the deadline were reverted to the last version submitted before the deadline.
 - 5 proposals submitted by October 15, 2025 were withdrawn from the review by the PIs.
 - 2 proposals were granted extensions due to health-related issues.
 - 19 proposals were granted extensions due to the partial government shutdown.
 - Proposers were asked to submit a placeholder before the October 15, 2025 deadline.
 - The extended deadline was November 26, 2025, at 5:00pm EDT.
 - Extensions were granted to PIs/co-PIs unable to undertake research during the shutdown; students working directly under affected supervisors; PIs whose proposals rely heavily on contributions using resources affected by the shutdown.
 - 7 of those 19 proposals were withdrawn by PI.
 - **This resulted in a total of 2,930 submissions.**
 - 75 of those 2,930 proposals were found to be non-compliant and disqualified (they are excluded from these statistics). **Thus, a total of 2,855 proposals were reviewed.**



Submissions

- The 2,855 Reviewed proposals include
 - 870 proposal led by ESA PIs (30.5 %)
 - 107 proposals led by Canadian PIs (3.7%)
 - 34,378 Co-investigators in total
 - 7,363 Unique investigators (PI, co-PI & co-I)
- Representation from
 - 57 Countries (3 new JWST counties: Costa Rica, Egypt, Slovakia)
 - 48 US states + DC



Executive Summary



Executive Summary

- **Compliance Violations** (DAPR, page limits, template changes, or others)
 - 75 proposals were rejected for non-compliance and excluded from discussion and statistics
 - *(more information is provided on Slides 42+43)*
- **Acceptance Rate:**
 - **GO:** 1 in 11.4 for proposals and 1 in 12.5 for prime hours
 - **Survey:** 1 in 17.3 for proposals and 1 in 18.4 for targets
 - **AR:** 1 in 9.6 for proposals
- **Instruments (hours):**
 - MIRI 24.8%, NIRCам 18.2%, NIRISS 7.1%, NIRSPEC 49.6%
 - Imaging 27% vs Spectroscopy 73%
- **New PIs:** 46% of PIs are 1st time JWST PIs (111 of 240 unique)



Executive Summary – Acceptance Rates

Proposal Type	Proposals	Hours	% of Total Observing Time	Oversubscription
Very Small GO	105	1,116	13.9 %	1 in 9.6
Small GO	70	2,409	30.1 %	1 in 14.2
Medium GO	40	3,054	38.1 %	1 in 11.3
Large GO	10	1,430	17.9 %	1 in 11.1
Survey	3	536 (targets)	-	1 in 17.3 for Props and 1 for 18.5 for Targets
Regular AR	13	-	-	1 in 8.2
Theory AR	8	-	-	1 in 13
Legacy AR	3	-	-	1 in 6.7

* GO counts without GO Calibration



Executive Summary

- **CSA Acceptance**
 - 3.9 % of successful PIs and 5.6 % hours of total observing program
 - 3.2 % of successful Cols
 - Acceptance rate: 9.3 % of CSA submitted proposals and 8.8 % of CSA requested hours
 - Proposals: 10 out of 107 submitted
 - Hours: 445 h our of 5,026 h requested
- **ESA Acceptance**
 - 27.2 % of successful PIs and 26.5 % hours of total observing program
 - 33.8 % of successful Cols
 - Acceptance rate: 8 % of ESA submitted proposals and 6.1 % of ESA requested hours
 - Proposals: 69 out of 870 submitted
 - Hours: 2,056 h our of 33,669 h requested
- **Proposal acceptance fractions:**
 - 9 % for all proposals
 - 10 % for panelists



Executive Summary

- **Archival Research Programs** - 24 recommended (230 Submitted)
 - 13 Regular AR
 - 8 Regular Theory AR
 - 3 Legacy AR
- **Medium Proposals**
 - 40 out of 451 recommended for 3054 Hours
- **Calibration Proposals**
 - 2 GO recommended for 53 Hours
 - 0 AR recommended
- **ToO Proposals/Activations** – 7 recommended (94 Submitted)
 - 0 Ultra-Disruptive, 1 Disruptive and 31 Non-Disruptive Activations
- **Pure Parallels** - 1 recommended (14 Submitted)
- **Cloud Computing** - 0 recommended (3 Submitted)
- **Data Science Software** - 2 recommended (19 Submitted)
- **Zero Exclusive Access Period**
 - 2,275 hours hours of GO programs (28% of the Program)



Executive Summary

- **Joint Programs:**
 - **Joint ALMA:** 0 recommended (31 for 359 hours submitted)
 - **Joint CHANDRA:** 0 recommended (3 for 215 ksecs submitted)
 - **Joint HST:** 9 for 55 Orbits Recommended (38 for 630 orbits submitted)
 - **Joint KECK:** 0 recommended (3 for 3 nights submitted)
 - **Joint NOIRLab:** 0 recommended (6 for 6.2 nights submitted)
 - **Joint NRAO:** 0 recommended (6 for 61.8 hours submitted)
 - **Joint XMM:** 1 for 5 Ksec recommended (9 for 486 ksecs submitted) [it also requests 3 HST orbits]
- **Investigators** of recommended proposals include (*more statistics in later slides*):
 - 254 PIs; 177 CoPIs; 3,624 Cols = 4,055 Total Investigators; 2,333 Unique Investigators
 - 37 Countries
 - 44 US States + DC
 - 7 Canadian Provinces and Territories
 - 18 ESA Countries



Summary Results

- CSA & ESA Hours/Proposals are for GO/Survey only
- * +52.6 Hours are from Calibration Pool

Proposals	Reviewed	Approved	% Accepted	CSA Accepted	CSA % Total	ESA Accepted	ESA % Total
GO	2,568	225	8.8 %	9	4 %	64	28.2 %
Calibration (GO & AR)	8	2	25.0 %	0	0 %	1	50.0 %
SURVEY	52	3	5.8 %	0	0 %	3	75.0 %
Treasury (incl. in GO)	43	3	7.0 %	0	0 %	1	25.0 %
AR Regular	107	13	12.1 %			1	7.7 %
AR Legacy	20	3	15.0 %	1	33 %		
AR Theory	104	8	7.7 %				
Total	2,855	254	8.9 %	10	3.9	69	26.8
Primary Hours	99,782	8,009	8.0 %	445	5.6	2,125	26.5



Recommended Executive Committee Proposals



Recommended Programs from the Galactic Executive Committee

ID	Resources (hours)	Science Category	Title
9709	182.5	Exoplanet Atmospheres and Habitability	Parting the Clouds: An optimized limb-limb exoplanet survey to reveal diurnal cloud cycling and the mass-metallicity relation
10047	196.3	Exoplanetary System Formation and Dynamics	IN/AT-SYNC: INterior/ATmosphere SurveY of sub-Neptunes in Chains
10678	143.2	Stars and Stellar Populations	The JWST/NIRCam Legacy Survey of the Galactic Center
10961	35.8	Stars and Stellar Populations	Binaries In the Galactic Center - an Astrophysical Treasury Survey (BIGCATS)
11441	79.7	Stars and Stellar Populations	The JWST Spectral Library for Cool Stars
11751	AR	Exoplanetary System Formation and Dynamics	Increasing the sensitivity of all high-contrast imaging through physics-based PSF subtraction and automatic differentiation
11793	143.7	Solar System Astronomy	The Composition and Origins of the Main-Belt Asteroids
12274	AR	Stars and Stellar Populations	The Faint Frontier: Pushing Proper Motion Limits with JWST+Gaia

8 Programs recommended for 781.2 Hours



Recommended Programs from the Extragalactic Executive Committee

ID	Resources (hours)	Science Category	Title
9637	139.5	High-redshift Galaxies and the Distant Universe	A definitive test of the Hubble tension - independent of the local distance ladder
9645	169.3	High-redshift Galaxies and the Distant Universe	The Core of the Iceberg: the Physics of Sub-L* Galaxies in the First Billion Years
10046	159.4	Nearby Galaxies to Cosmic Noon	Resolving Stellar Feedback in Action via NIRCам and MIRI Imaging of Very Nearby Galaxies
10202	156.5	High-redshift Galaxies and the Distant Universe	MIRAGE: MIRI Investigation of Red and Ancient Galaxies in the Early Universe
10790	1000 PPAR	High-redshift Galaxies and the Distant Universe	LAPIS: Large Area Parallel Imaging Survey
11074	AR	Nearby Galaxies to Cosmic Noon	Resolving Galaxy Evolution: A Public Framework for JWST Slitless Spectroscopy
12435	139.2	High-redshift Galaxies and the Distant Universe	Massive stars in the first gigayear revealed with an ultra-deep NIRSpec stare

7 Programs recommended for 763.9 Hours + 1000 Pure Parallel hours



Recommended Medium Proposals



Recommended Medium Programs per Science Category

- Dust and Gas: 1 Program for 122 h
- Exoplanet Atmospheres: 6 programs for 557 h
- Planetary Systems: 5 programs for 391 h
- Solar System: 1 program for 14.4 h (multi-cycle)
- Stars & Stellar Populations : 4 programs for 351 h + 2 Treasury for 116 h (in EC)
- Galaxy Ecosystems: 5 programs for 303 h
- Galaxy Frontiers: 9 programs for 712 h
- Supermassive Black Holes: 7 programs for 581 h

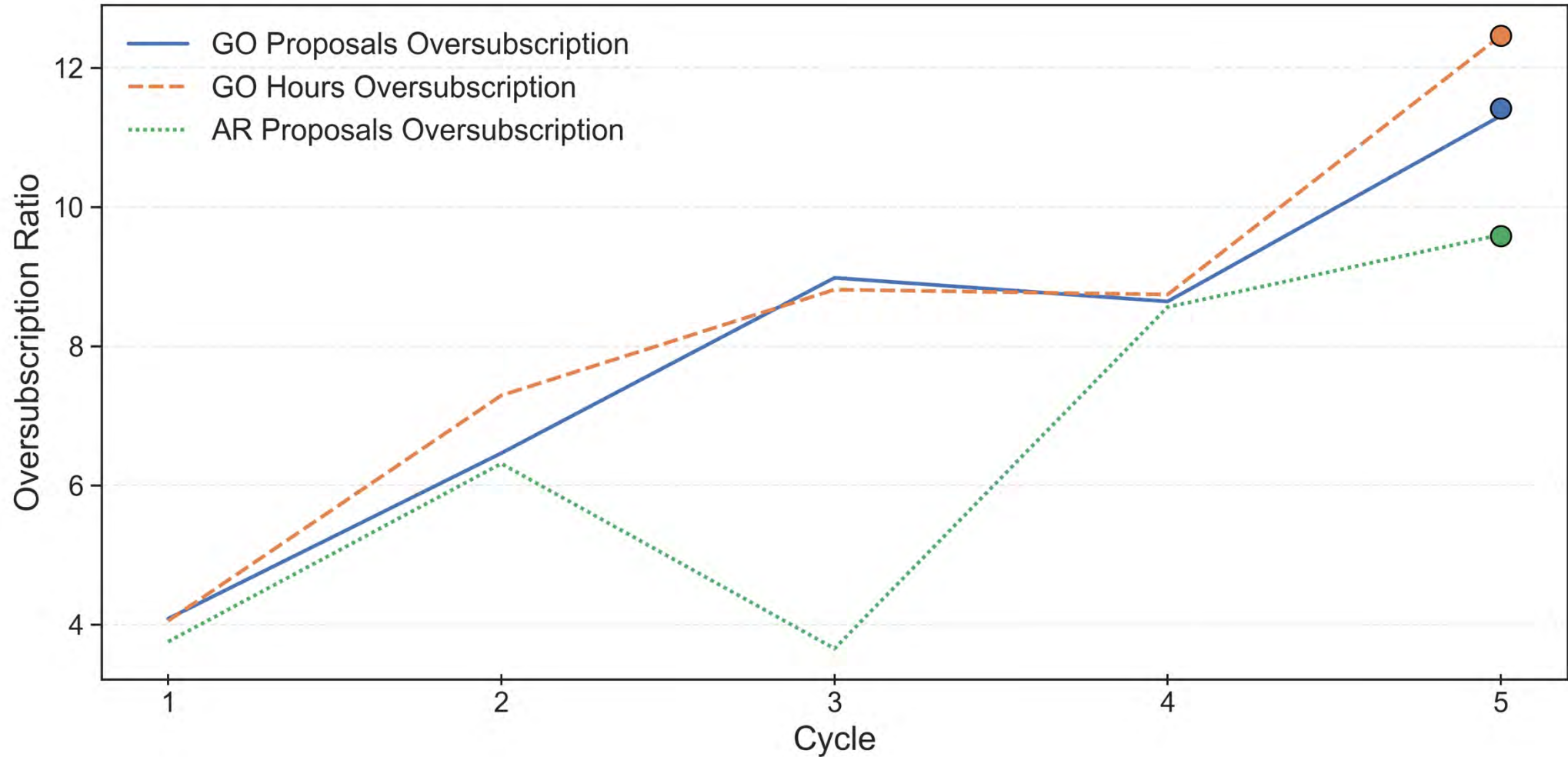
Total Medium from Discussion Panels: 38 Programs for 3031 h
+ 2 Treasury Mediums for 116 h in EC

The background of the slide is a deep blue and black space filled with numerous stars of varying sizes and colors, including bright white and yellow stars and smaller, dimmer blue and red stars. A large, diffuse nebula with wispy, ethereal structures in shades of blue, purple, and brownish-gold is visible, particularly on the left and bottom portions of the frame. The overall effect is a rich, multi-colored star field.

Summary Statistics and Charts

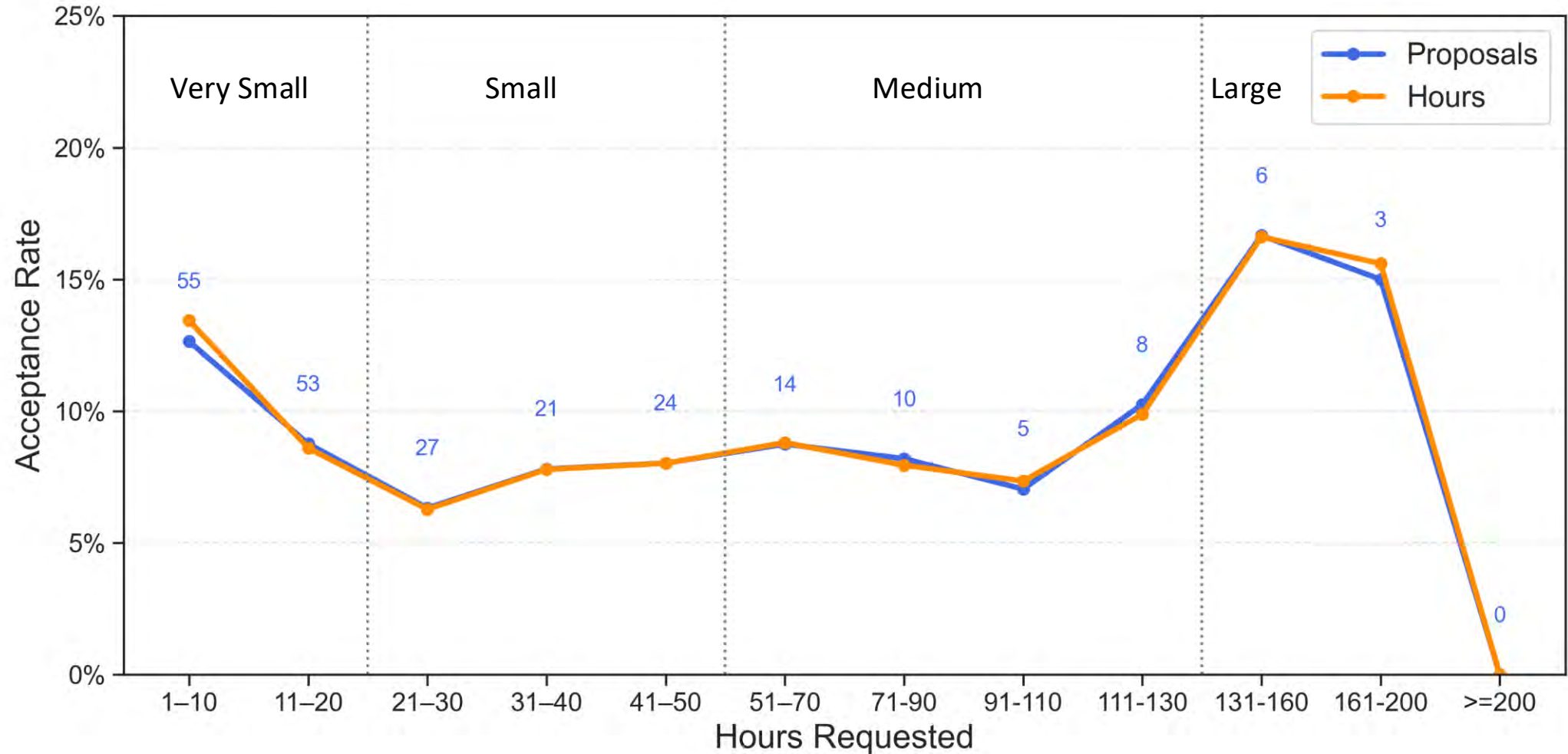


Oversubscription by Cycle



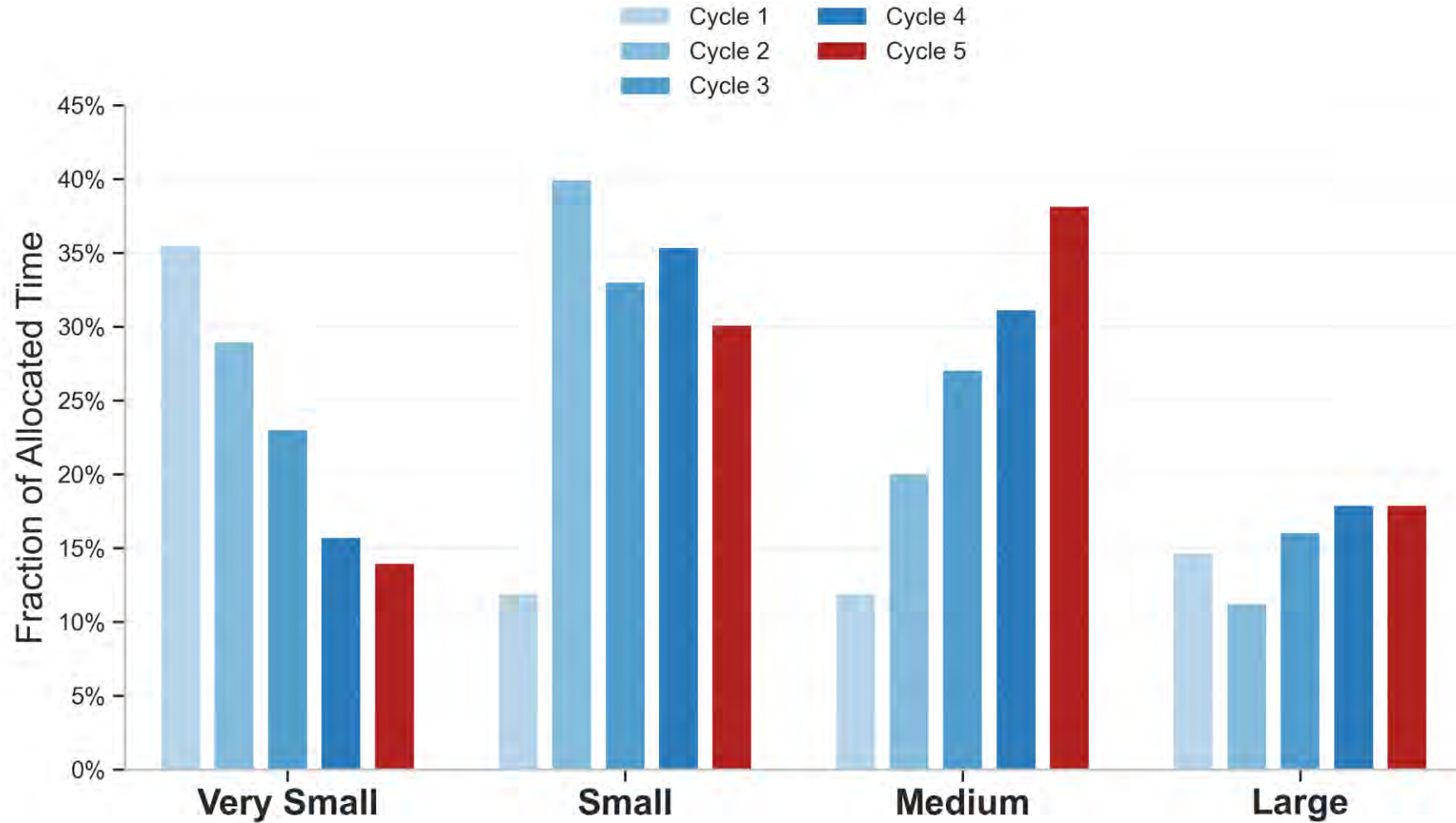


Acceptance Fraction by Size



Dotted line - Proposal Size Boundaries

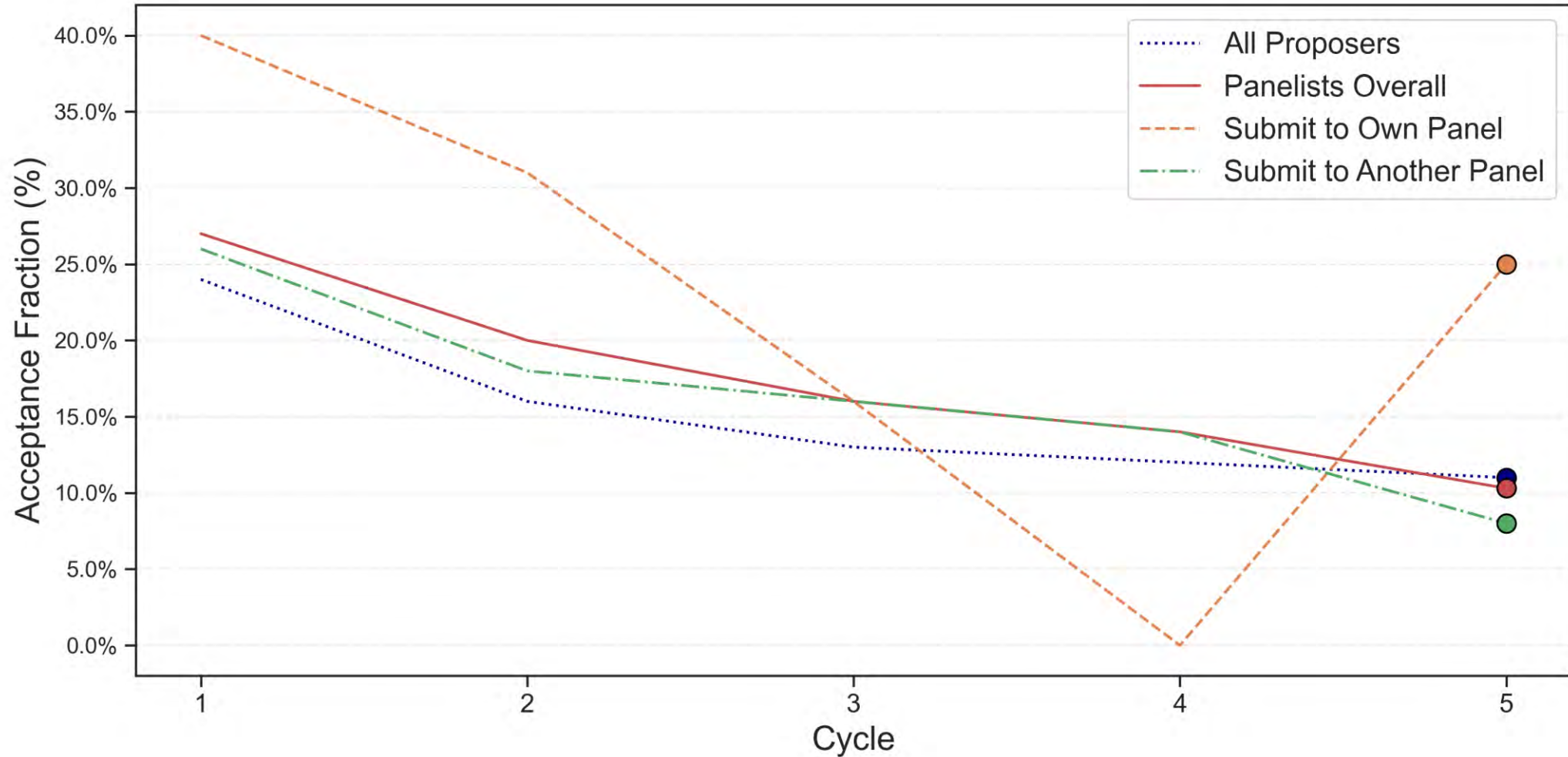
Fraction of time by Size Boundaries (Hours)



Size Boundaries rescaled for Cycles 1-3 to Cycle 4 Boundaries



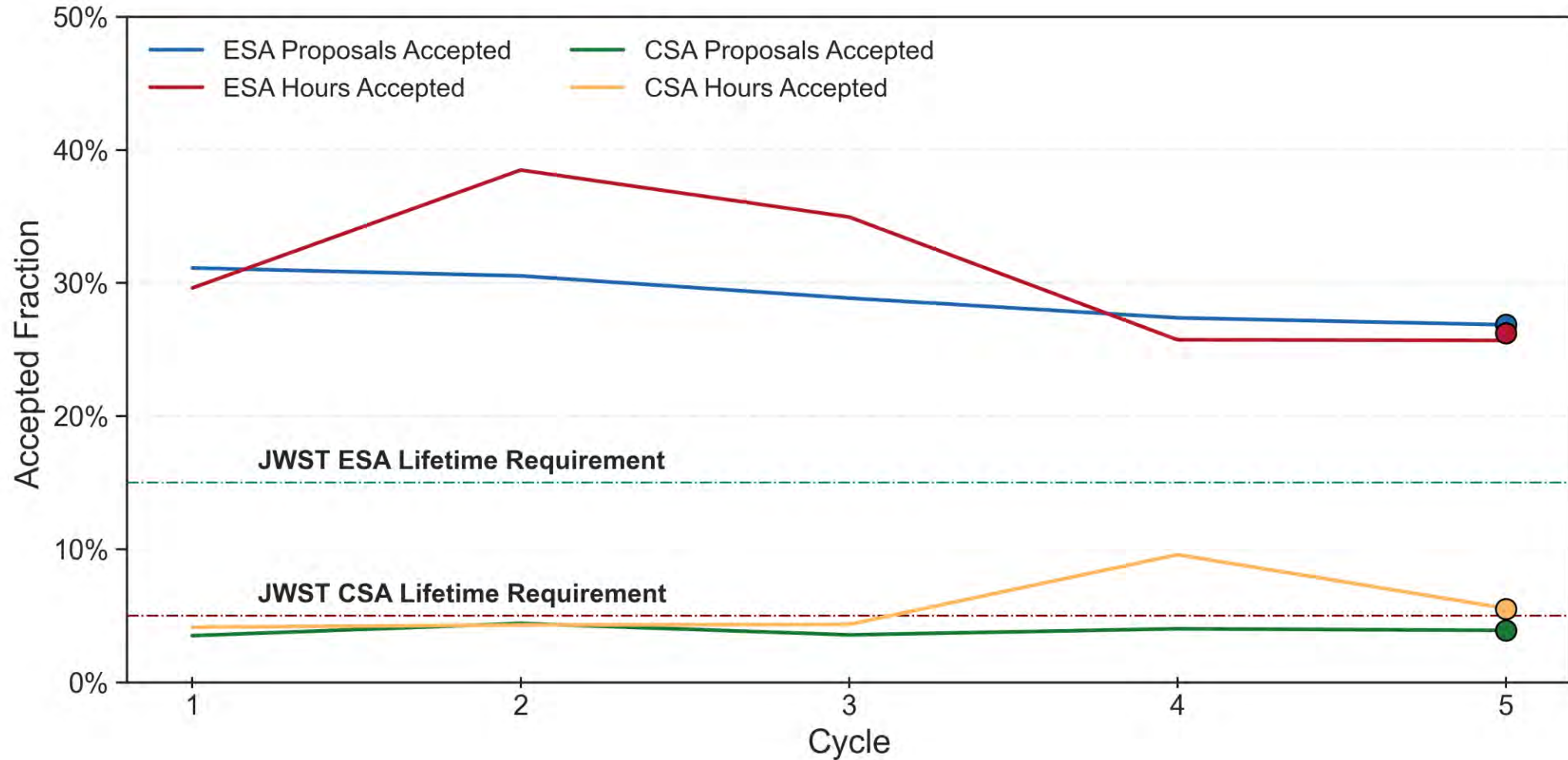
Panelist Acceptance Fraction



28 proposals submitted to “Own Panel”, 7 accepted
 215 submitted to “Another panel”, 18 accepted

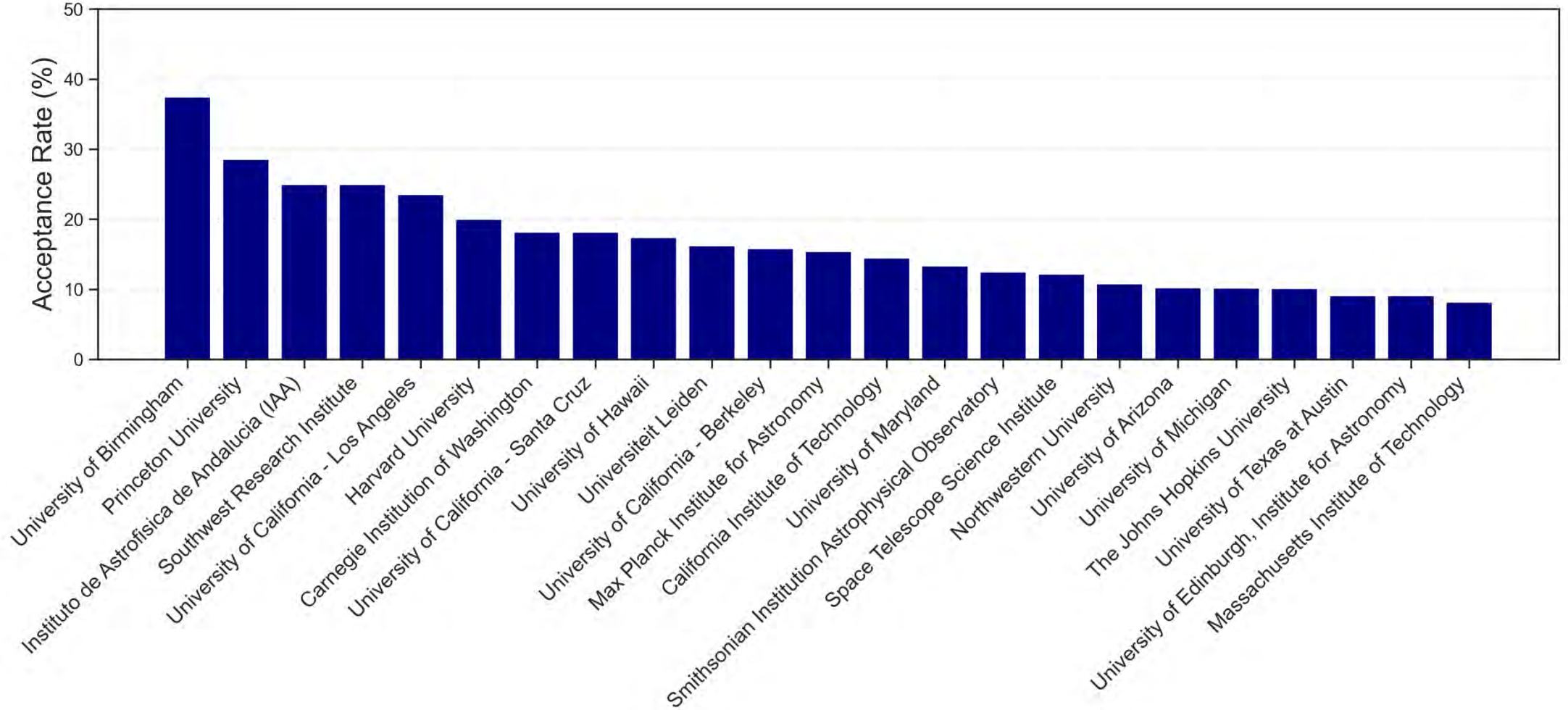


CSA and ESA Acceptance Fraction



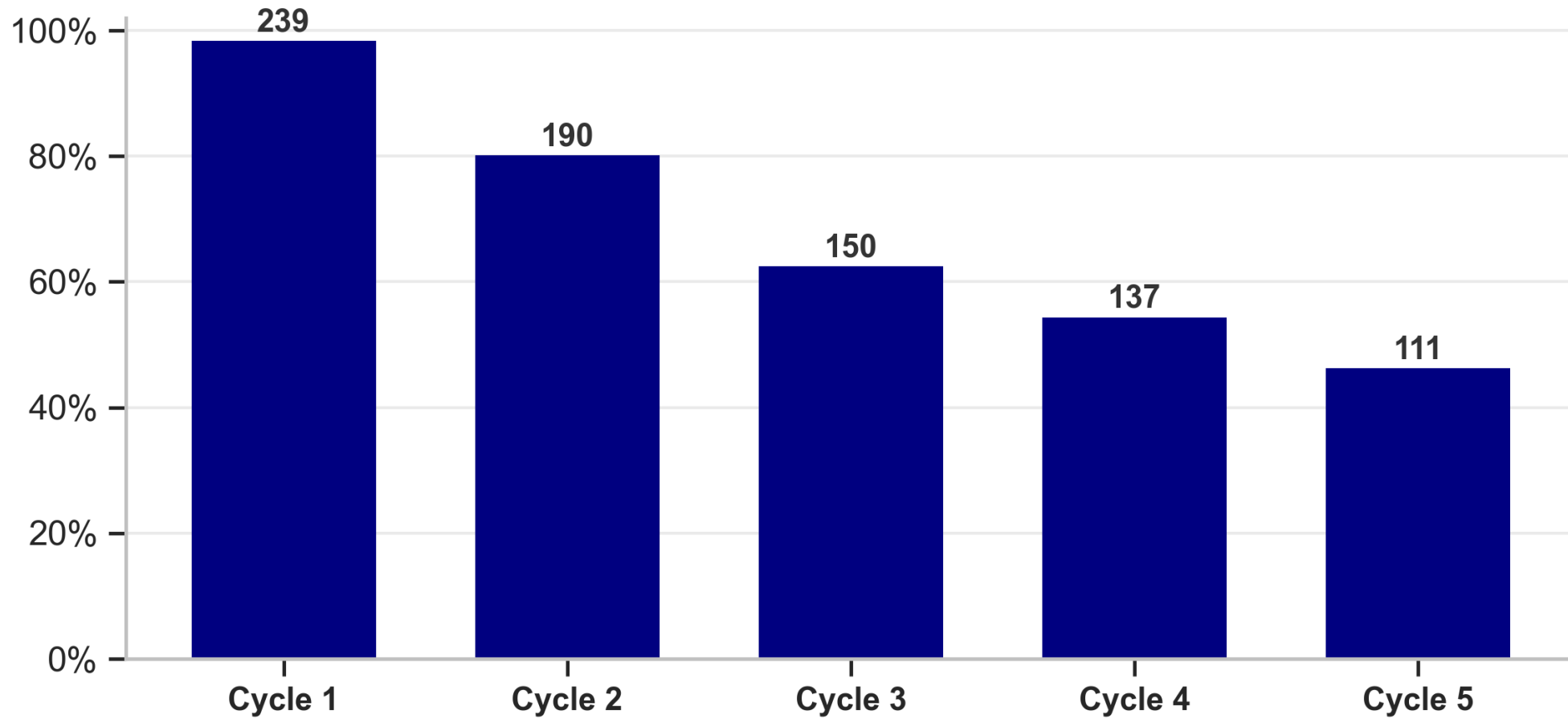


Proposal Institutional Acceptance Fraction



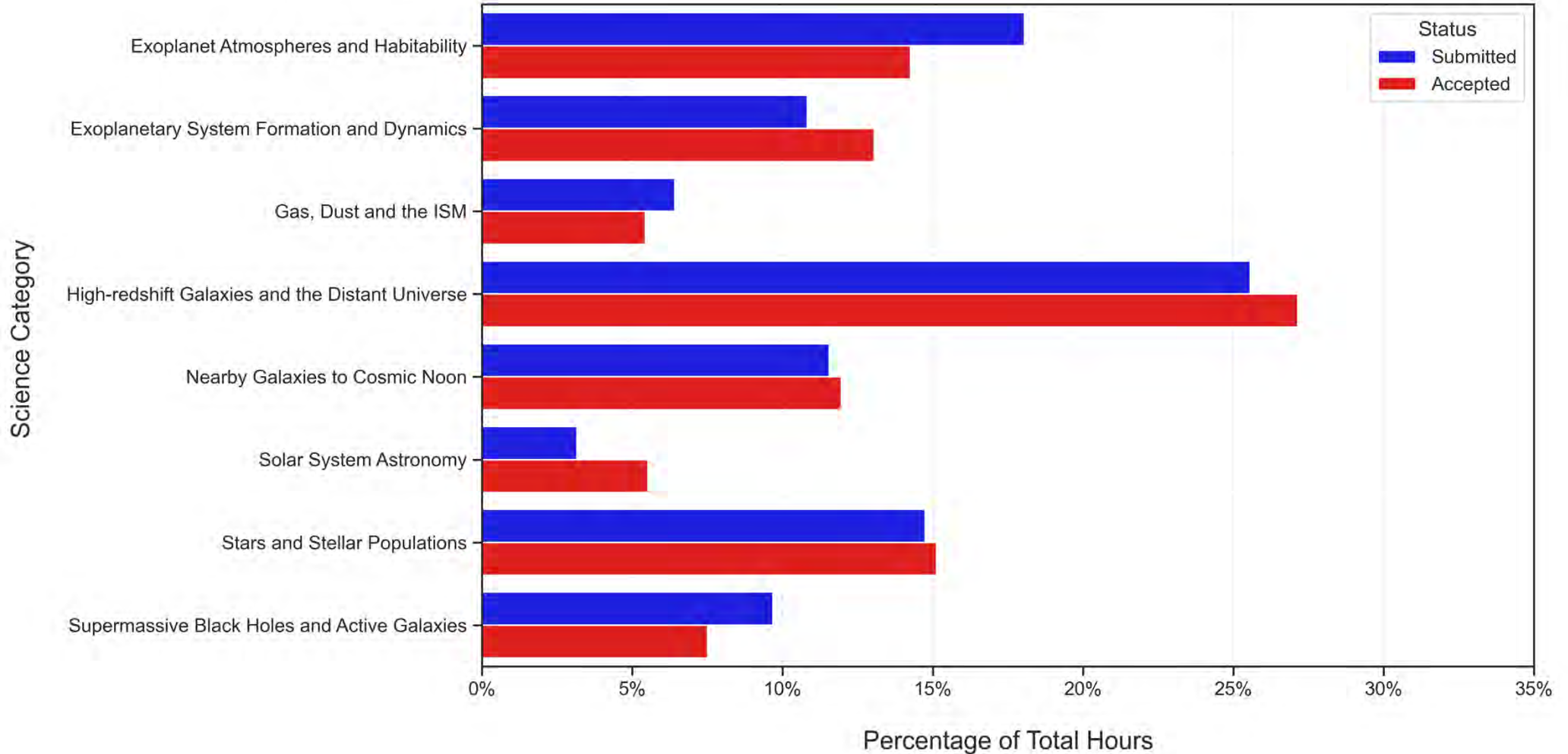


Percentage of New (successful) JWST PIs



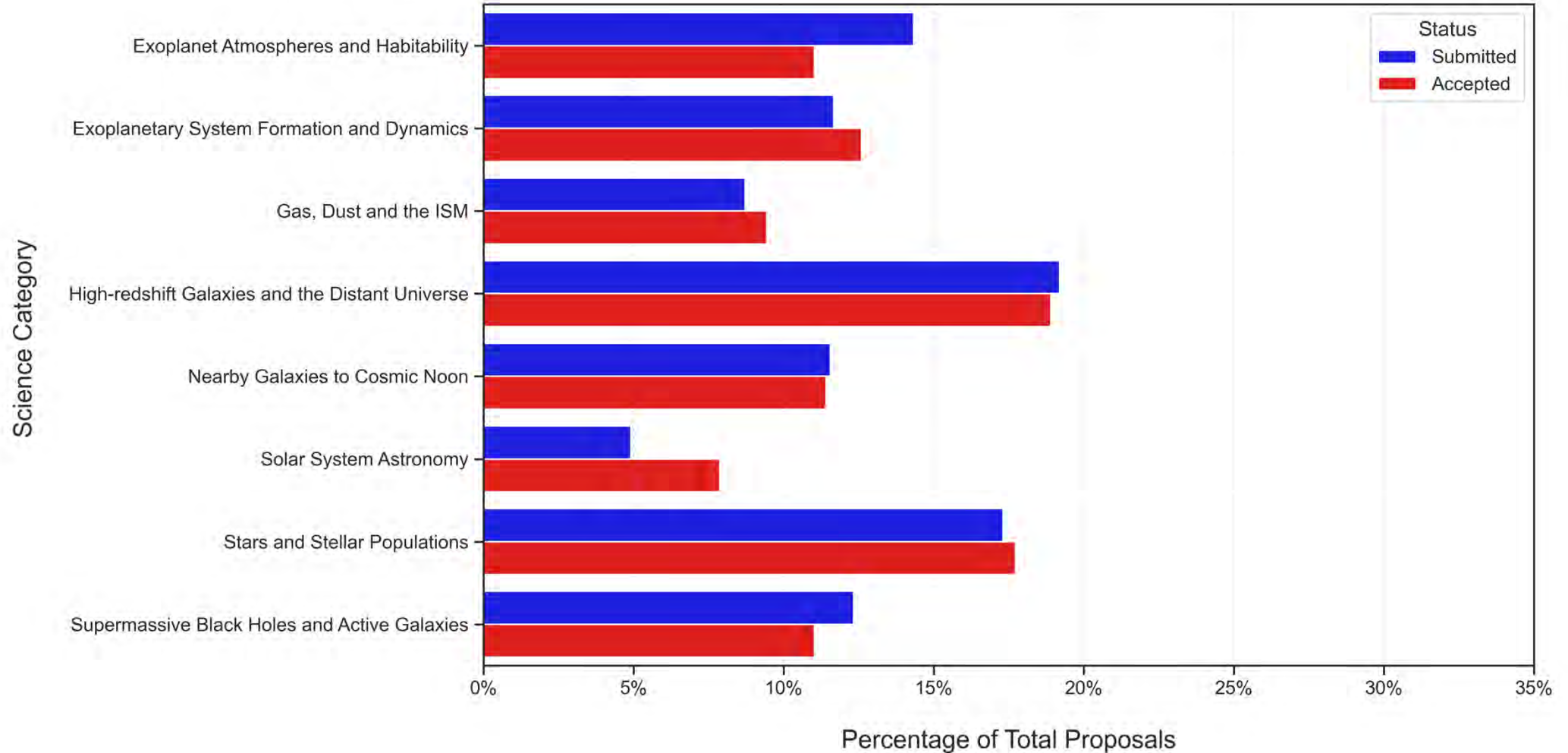
* Cycle 1 PIs were checked against ERS programs

Science Category Distribution for Hours





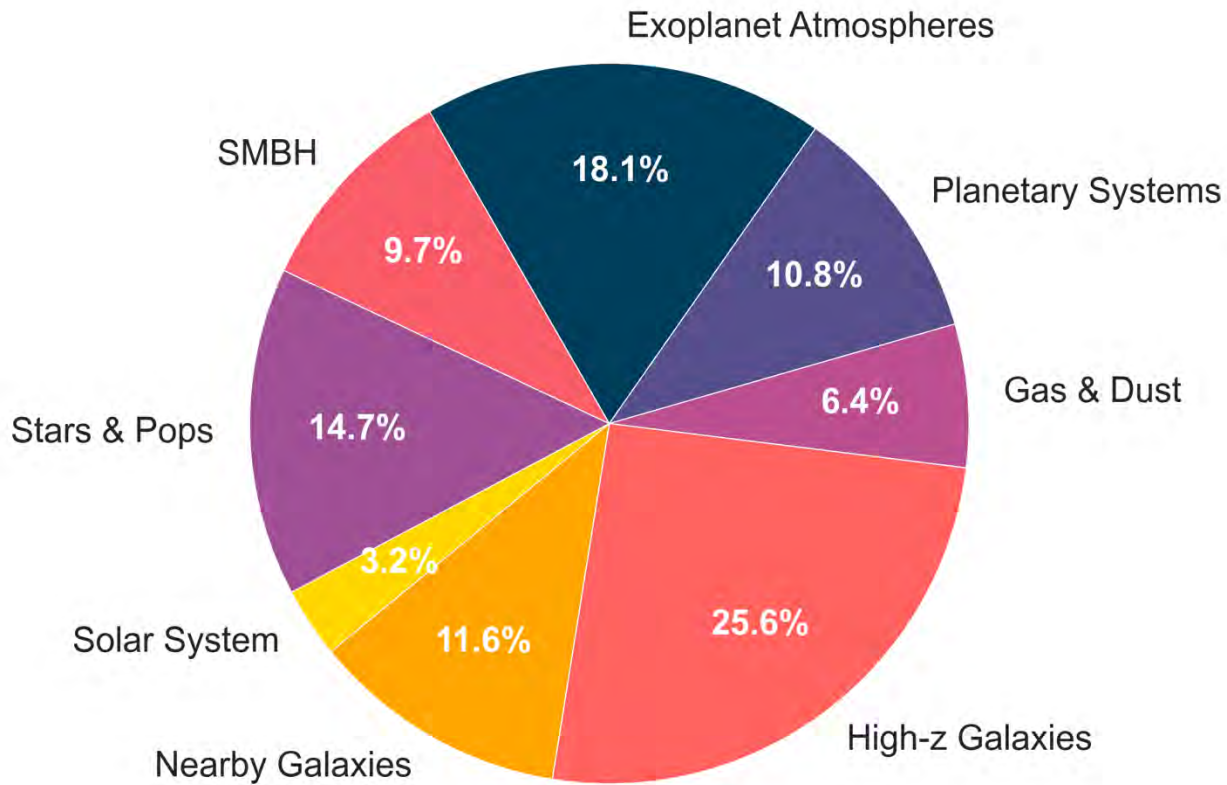
Science Category Distribution for Proposals



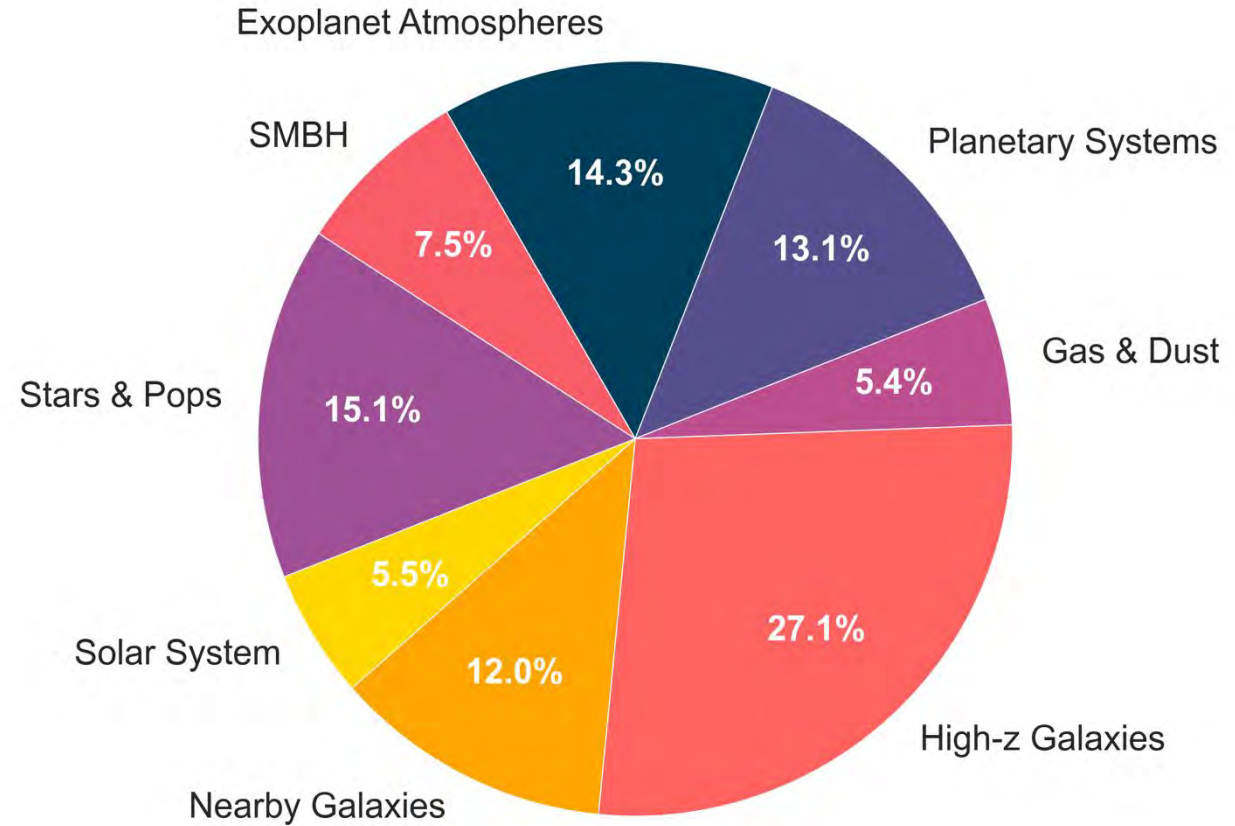


Submitted vs Approved Hours by Science Category

Submitted



Approved





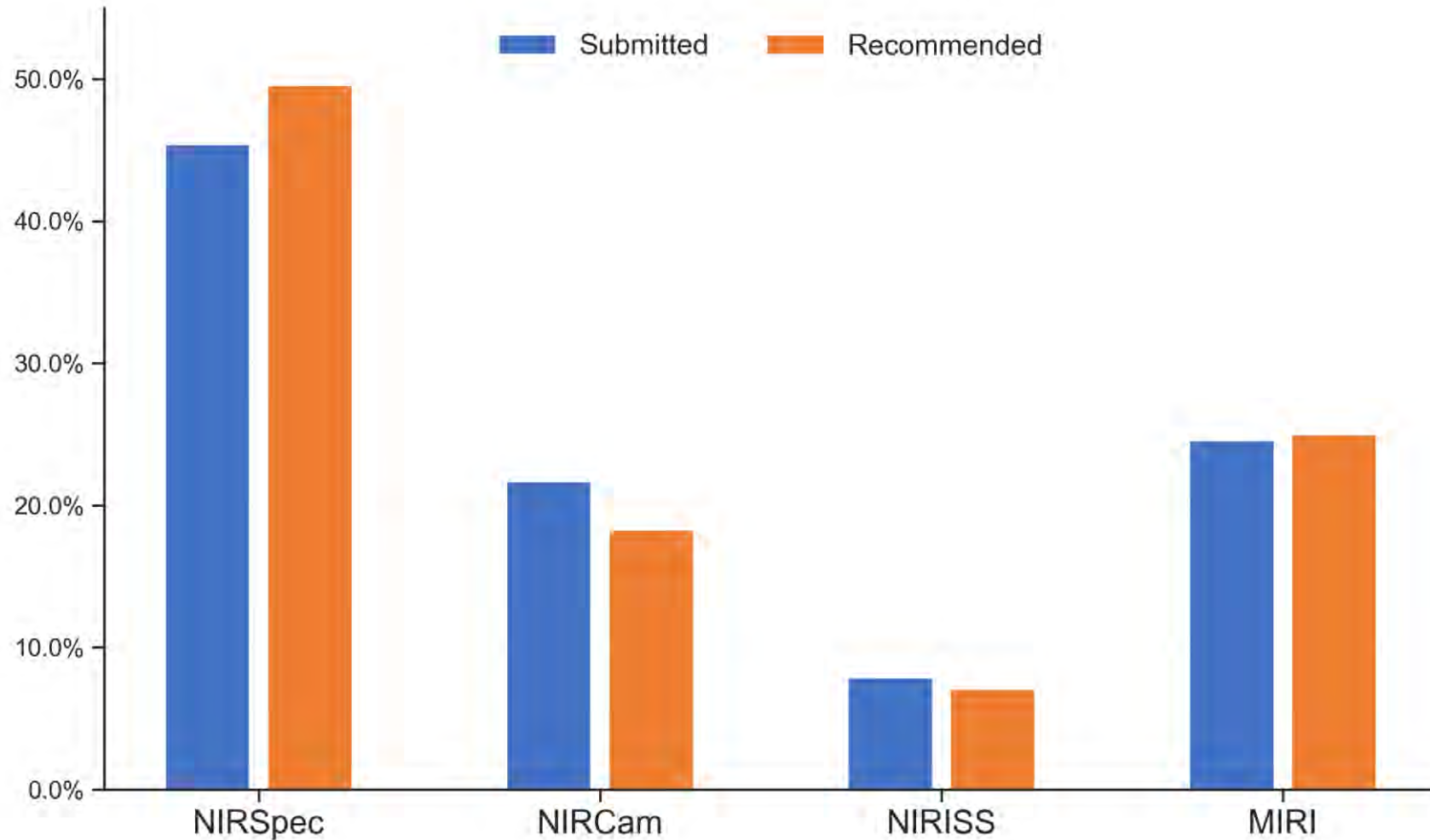
Instruments

Imaging 27 % vs 73 % Spectroscopy

Instrument Config	Mode	Prime %	Coord. Parallel %	Total %	Instrument Prime %	Instrument Prime + Coord. %	Pure Parallel %
NIRSpec Bright Object Time Series	SPECTROSCOPY	10.3	0	9.3	54.7	49.6	
NIRSpec Fixed Slit Spectroscopy	SPECTROSCOPY	4.1	0	3.7			
NIRSpec IFU	SPECTROSCOPY	13.8	0	12.5			
NIRSpec MOS	SPECTROSCOPY	26.5	0	24.1			
NIRCam Coronagraphy	IMAGING	0.9	0	0.8	13.3	18.2	
NIRCam Grism Time Series	SPECTROSCOPY	0.2	0	0.2			
NIRCam Imaging	IMAGING	8.4	64.9	13.7			100 %
NIRCam Time Series	IMAGING	0	0	0			
NIRCam WFSS	SPECTROSCOPY	3.8	0	3.5			
NIRISS Imaging	IMAGING	0	6.1	0.6	6.9	7.1	
NIRISS AMI	IMAGING	1.5	0	1.3			
NIRISS SOSS	SPECTROSCOPY	5.4	0	4.9			
NIRISS WFSS	SPECTROSCOPY	0	2.8	0.3			
MIRI Coronagraphy	IMAGING	2.3	0	2.1	25.1	24.8	
MIRI Imaging	IMAGING	7.2	21.9	8.6			
MIRI LRS	SPECTROSCOPY	4.8	0	4.3			
MIRI MRS	SPECTROSCOPY	10.1	0	9.1			
MIRI WFSS	SPECTROSCOPY	0.7	0	0.7			

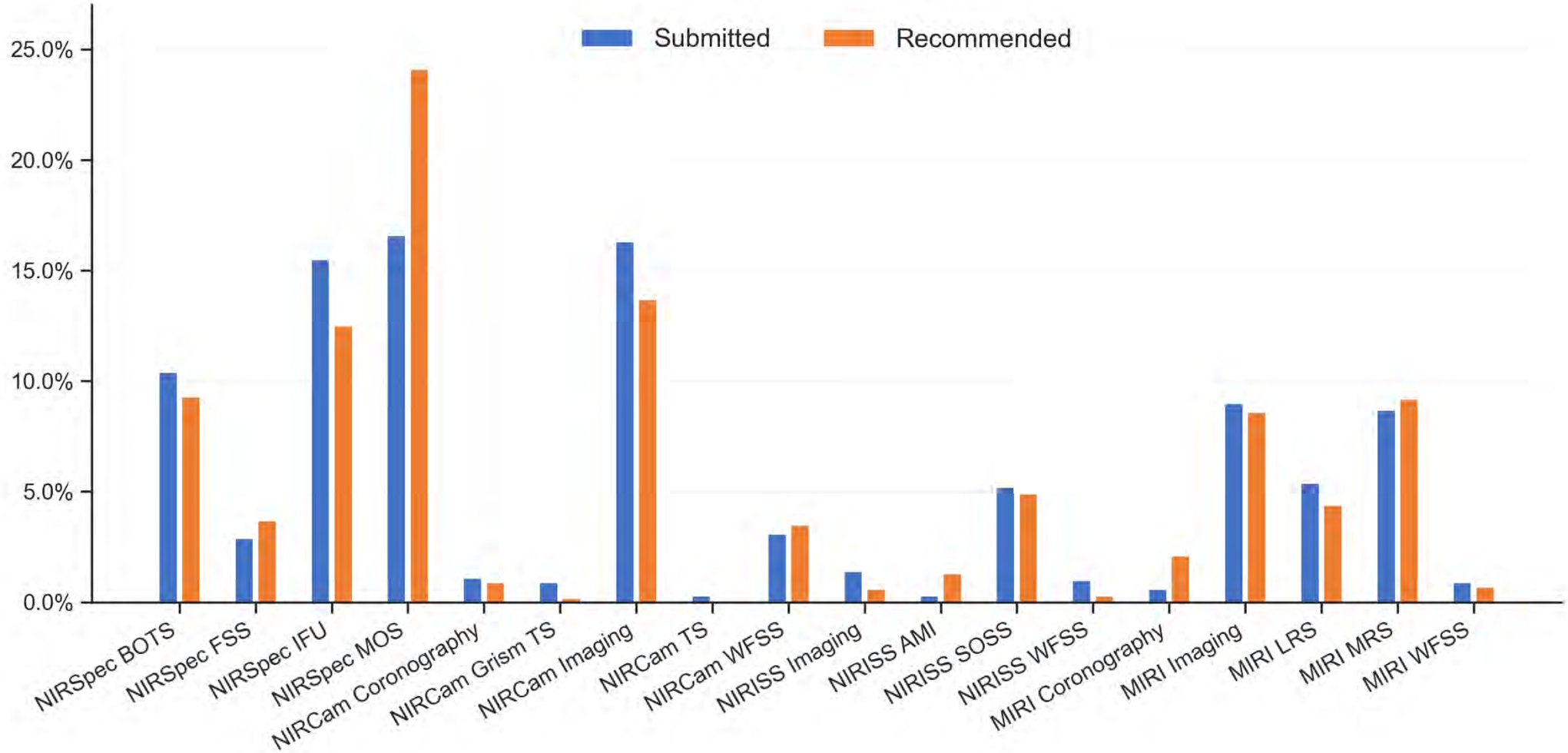


Instruments - Prime + Coordinated Parallel Hours



Imaging 27% vs 73% Spectroscopy

Instrument Modes - Prime + Coordinated Parallel Hours



Imaging 27% vs 73% Spectroscopy



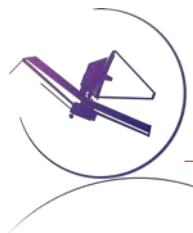
Initiatives and Special Proposal Categories



Target of Opportunity Proposals

- 94 proposals submitted requesting 1 Ultra—Disruptive, 13 Disruptive, and 352 Non-Disruptive activations
- 7 proposals recommended including 0 Ultra—Disruptive, 1 Disruptive, and 31 Non-Disruptive activations

ID	Hours	Ultra-Disruptive Activations	Disruptive Activations	Non-Disruptive Activations	Total Activations	Carry-Over	Type of ToO
9582	11.1	0	0	1	1	YES	Jupiter or Saturn Impact
9811	54.5	0	1	1	2		Lensed Supernova
9903	13.9	0	0	1	1	YES	Earth threat asteroid
11103	20.9	0	0	1	1		FRB Host
11348	21.84	0	0	21	21		GRBs
11933	48.7	0	0	1	1		Kilonova
12146	120.9	0	0	5	5	YES	High-z SN Ia
Total	291.84	0	1	31	32		



NEW: Long-Term Monitoring (LTM) Initiative

- To encourage proposals in short-term and long-term time domain astronomy, including first epoch observations for future time domain work, later-epoch observations to probe astrometric, photometric, or spectroscopic variations, or regular monitoring of variable phenomena.
- 49 proposals submitted:
 - 48 GO proposals (incl. 10 ToO, 11 Treasury, 36 Future-Cycle)
 - 1 AR proposal (incl. 1 Legacy)
- 5 proposals recommended: 4 GO programs & 1 AR Legacy Proposal

ID	Time (h)	Title	Science Category
10961	35.8 + 35.8 + 35.8	<i>Binaries In the Galactic Center - an Astrophysical Treasury Survey (BIGCATS)</i>	Stars and Stellar Pops
10488	14.4 + 14.4 + 14.4 + 14.4 + 14.4	<i>Uranus Solstice Explorer: Temporal Change in the Atmosphere, Ionosphere, and Ring-Moon System</i>	Solar System
12274	AR	<i>The Faint Frontier: Pushing Proper Motion Limits with JWST+Gaia</i>	Stars and Stellar Pops
10908	4.7 + 4.7 + 4.7 + 4.7 + 4.7	<i>Sources and Seasonal Evolution of CO₂ on Ocean World Enceladus</i>	Solar System
11553	3.9 + 3.9 + 3.9 + 3.9 + 3.9	<i>Playing the long game: Observing the long-term temperature trend of Neptune's upper atmosphere</i>	Solar System



NEW: Roman Preparatory Science (RPS) Initiative

- To encourage proposals for JWST observations that complement and enhance the scientific impact of Roman observations, or that are essential to achieving critical science goals of future Roman programs.
- 33 proposals submitted:
 - 24 GO (incl. 2 Pure Parallel, 2 ToO, 5 Treasury) for 1760.1h in Cycle 5
 - 8 AR (incl. 4 Legacy)
 - 1 Survey
- 6 proposals recommended: 4 GO programs for 305.5h in Cycle 5 + 2 AR programs (incl. 1 Legacy)

ID	Time (h)	Title	Science Category
10678	143.2	<i>The JWST/NIRCam Legacy Survey of the Galactic Center</i>	Stars and Stellar Pops
12146	120.9	<i>Standard-ish Candles: Measuring SN Ia Luminosity Drift at $z > 3$</i>	High-z Galaxies
10961	35.8 + 35.8 + 35.8	<i>Binaries In the Galactic Center - an Astrophysical Treasury Survey (BIGCATS)</i>	Stars and Stellar Pops
11074	AR	<i>Resolving Galaxy Evolution: A Public Framework for JWST Slitless Spectroscopy</i>	Nearby Galaxies
11506	AR	<i>JWST–Roman–Euclid Purity Project: Calibrating Slitless Redshifts for Cosmology</i>	High-z Galaxies
11940	5.6	<i>Toward the First Electromagnetic Detection of an Isolated Stellar-Mass Black Hole</i>	Stars and Stellar Pops



Future-Cycle GO Programs

- *Typically request time across up to 3 cycles, but up to 5 cycles permitted with the LTM Initiative.*
- 109 proposals submitted, requesting:
 - **5,779 h** in Cycle 5 + **3,990.1 h** in Cycle 6 + **2,517.6 h** in Cycle 7 + **1,358.7 h** in Cycle 8 + **874.7 h** in Cycle 9
 - Includes 36 LTM Initiative proposals, of which 26 requested time in Cycles 8 and/or 9
- 10 proposals recommended:
 - **295.2 h** in Cycle 5 + **138.1 h** in Cycle 6 + **115.9 h** in Cycle 7 + **23 h** in Cycle 8 + **23 h** in Cycle 9
 - Includes 4 LTM Initiative proposals, of which 3 were awarded time in Cycles 8 and/or 9



Calibration Proposals

- 8 Submitted:
 - 5 GO for 155 hours
 - 3 AR
- 2 Recommended:
 - 2 GO for 52.6 Hours

ID	Panel	Type	Title	Hours
10749	Solar System	GO	<i>A red follow-up for the MIRI/MRS Library</i>	34.4
11079	Planetary Systems	GO	<i>Extending NIRCcam Coronagraphy into the Optical Regime</i>	18.2



Survey Proposals

- 52 proposals submitted for 9,867 targets
- 3 proposals recommended for 536 targets

ID	Science Category	Targets	Title
11740	Stars and Stellar Pops	130	<i>A variability survey of temperate brown dwarf atmospheres</i>
11173	High-z Galaxies and the Distant Universe	200	<i>Pushing the Edge: A JWST Survey to Discover the Faintest Euclid QSOs at Cosmic Dawn</i>
10110	Stars and Stellar Populations	206	<i>Uncovering the coldest extra-solar worlds: a companion search down to 200K around the coolest brown dwarfs</i>



Pure Parallel Proposals

- 14 Submitted for 6,574.6 Hours
- 1 Recommended for 1,000 Hours

ID	Time (h)	Title	Science Category
10790	1000	<i>LAPIS: Large Area Parallel Imaging Survey</i>	High-z Galaxies

A background image of a starry night sky. On the left side, there is a large, colorful nebula with shades of blue, purple, and brown. The rest of the sky is filled with numerous stars of various colors, including blue, white, and yellow. A thin, horizontal orange line is positioned below the text.

Compliance Violations



Compliance Violations – Summary

- 75 proposals (2.6%) were disqualified from the review.
 - Proposals are disqualified for serious compliance violations.
 - Disqualified proposals do not receive a quintile and do not receive feedback comments from reviewers. They do receive a brief note from STScI with the reason for the disqualification.
- 54 proposals (1.8%) were issued warnings.
 - Proposals are issued warnings for minor or borderline compliance violations.
 - Proposals with warnings are fully reviewed, and may even be recommended for acceptance. They do receive quintile information and feedback comments from reviewers.
- Some proposals were disqualified or warned for more than one reason, or were disqualified for one reason and issued a warning for another.



Compliance Violations – Breakdown

- Reasons for (75) Disqualifications / (54) Warnings:
 - *Some proposals were disqualified or warned for multiple reasons. Numbers do not sum.*
 - **Dual Anonymous Peer Review (DAPR):** 22 DQs, 26 Warnings
 - **Font/Margin/Template Changes:** 26 DQs, 2 Warnings
 - **Page Limits:** 22 DQs, 3 Warnings
 - **Policy Issues:** 6 DQs, 2 Warnings
 - **Wrong Proposal Type:** 3 DQs, 3 Warnings
 - **Lack of Special Requirements:** 0 DQs, 20 Warnings
 - **Generative Artificial Intelligence:** 0 DQs, 5 Warnings
 - **Wrong PDF:** 3 DQs, 0 Warnings



Cycle 5 Resource Recommendation



Resource Recommendations

- 254 Recommended proposals:
 - 227 GO Prime
 - 2 GO Calibration
 - 24 Archival Research (3 Legacy/8 Theory/13 Regular)
 - 3 Surveys for 536 Targets
 - 1 Pure Parallel
- Plan for 8,000 hours for GO Programs
- 8,009 hours is the GO Recommendation
 - 1,116 for Very Small Proposals (≤ 20)
 - 2,409 for Small Proposals (> 20 hours - ≤ 50 hours)
 - 3,054 for Medium Proposals (> 50 – ≤ 130 hours)
 - 1,430 for Large Proposals (> 130 hours)
 - Additional 53 h for GO Calibration proposals
 - 1,000 Pure Parallel Hours

The background of the slide is a deep blue and black space filled with numerous stars of varying colors, including bright white and yellow ones, and some fainter blue and red stars. A large, diffuse nebula with wispy, ethereal structures in shades of blue, purple, and brownish-gold is visible, particularly on the left side and extending towards the center. The overall effect is a rich, multi-colored star field.

Investigator Statistics



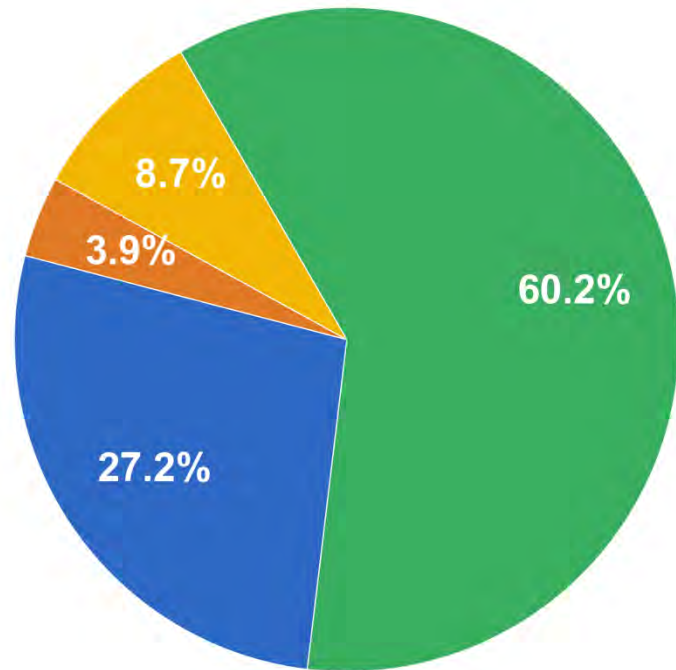
Investigators of Recommended Programs

- 254 PIs; 177 CoPIs; 3624 Cols = 4055 Total Investigators; 2333 Unique Investigators
- CSA 10 PIs; 10 CoPIs; 117 Cols
- ESA 69 PIs; 62 CoPIs; 1227 Cols
- Investigators from:
 - 37 Countries
 - 44 US States + DC
 - 7 Canadian Provinces and Territories
 - 18 ESA Countries
 - 458 Unique Institutions



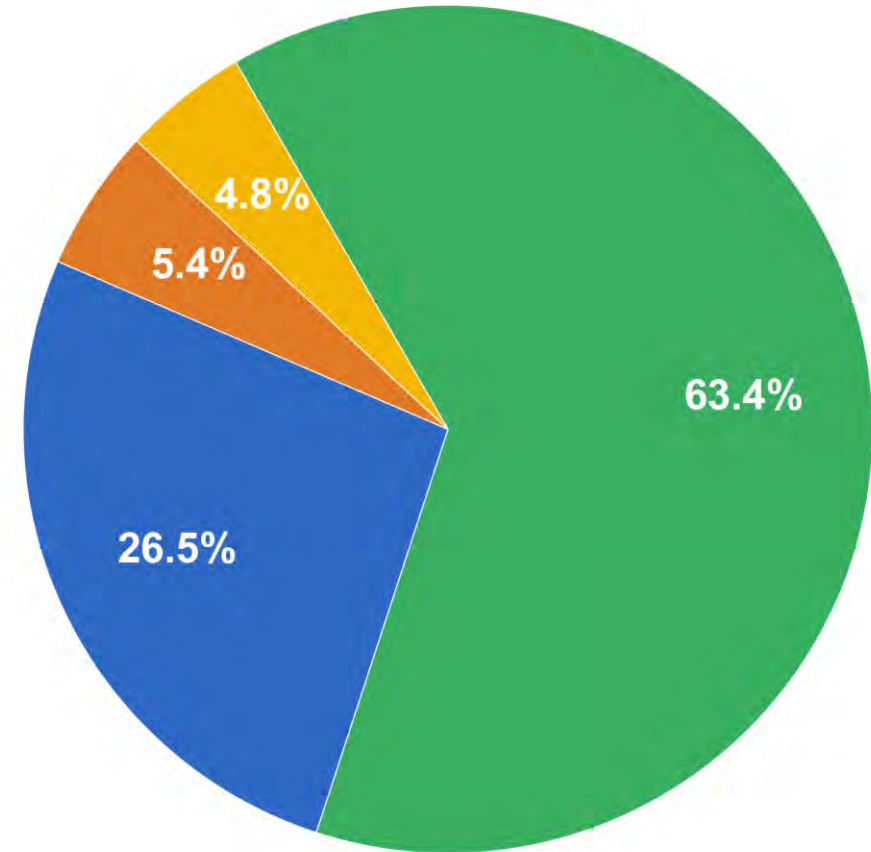
Cycle 5 Geographic Representation

Proposals



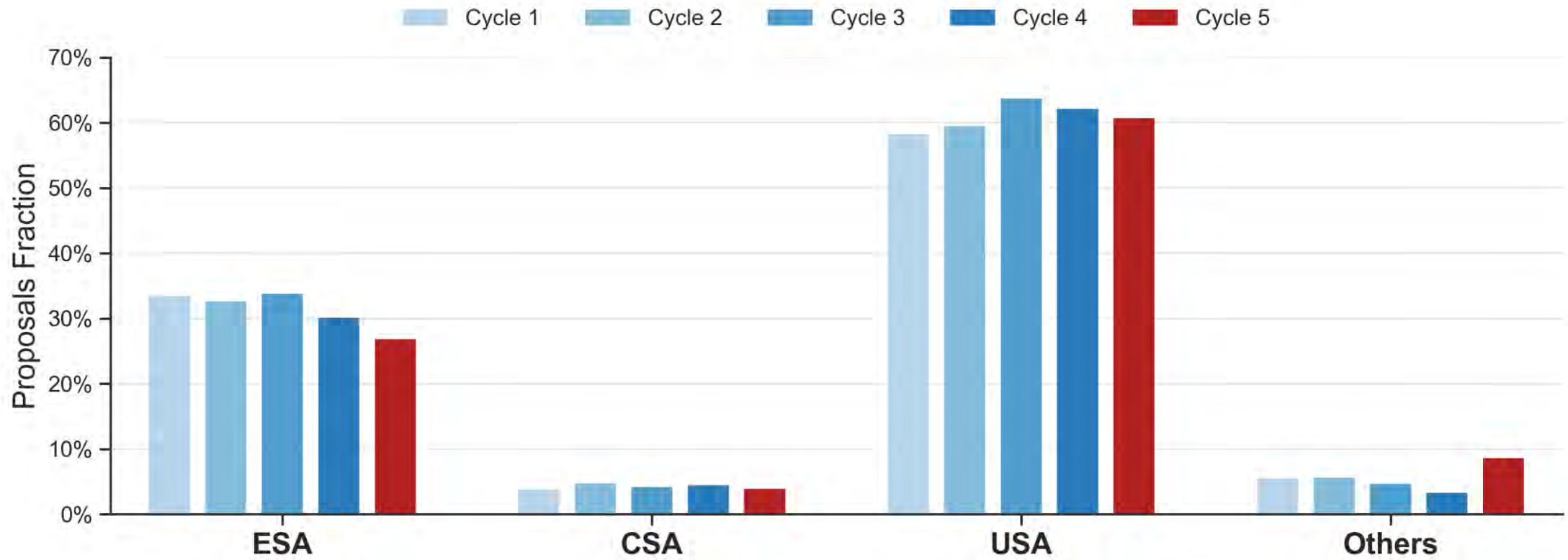
- USA
- ESA
- CSA
- Other

Hours



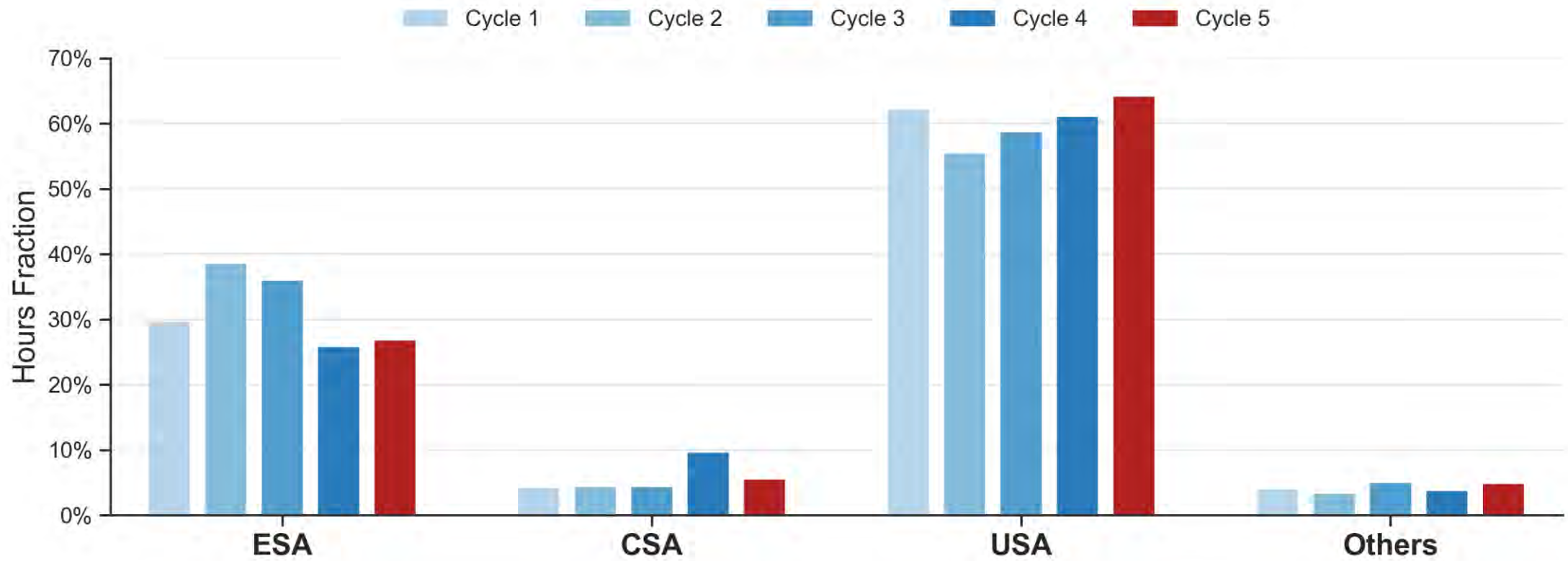


Geographic Representation by Proposals





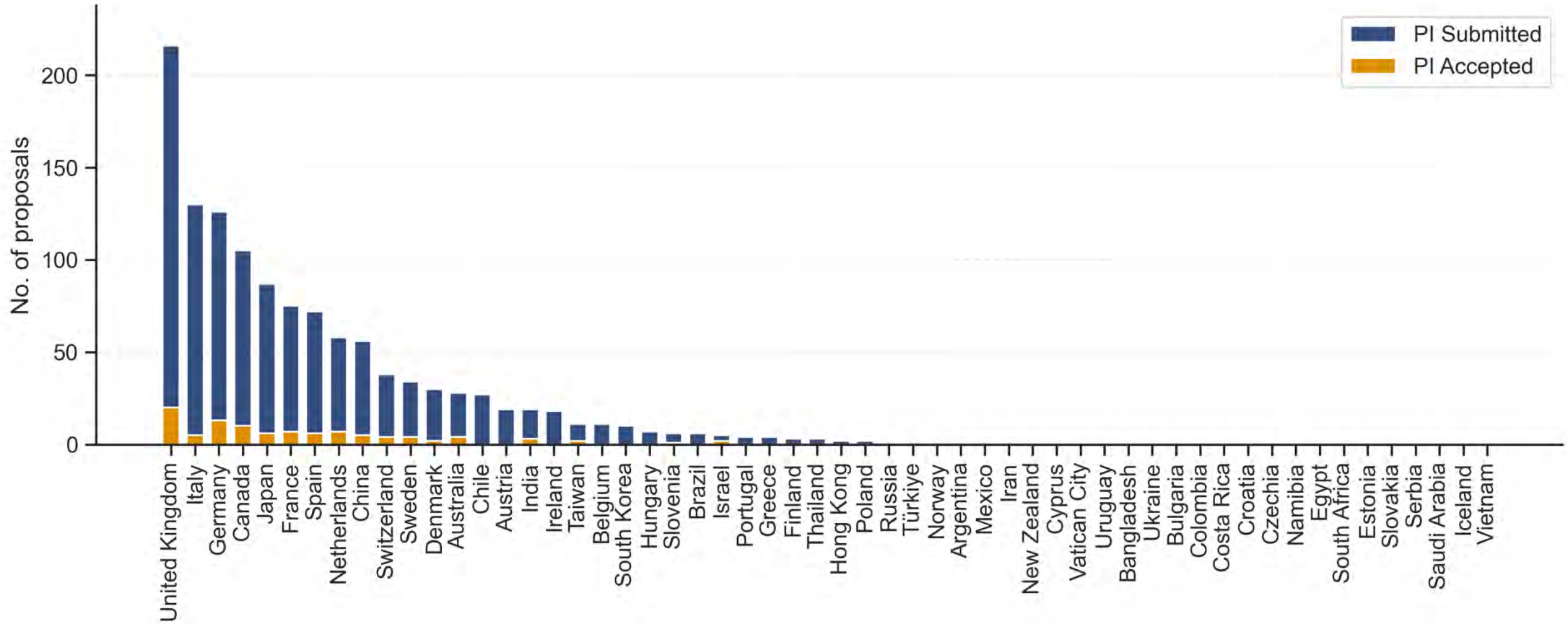
Geographic Representation by Hours





Countries of PIs

USA PIs (not shown):
Submitted 1639 (57 %)



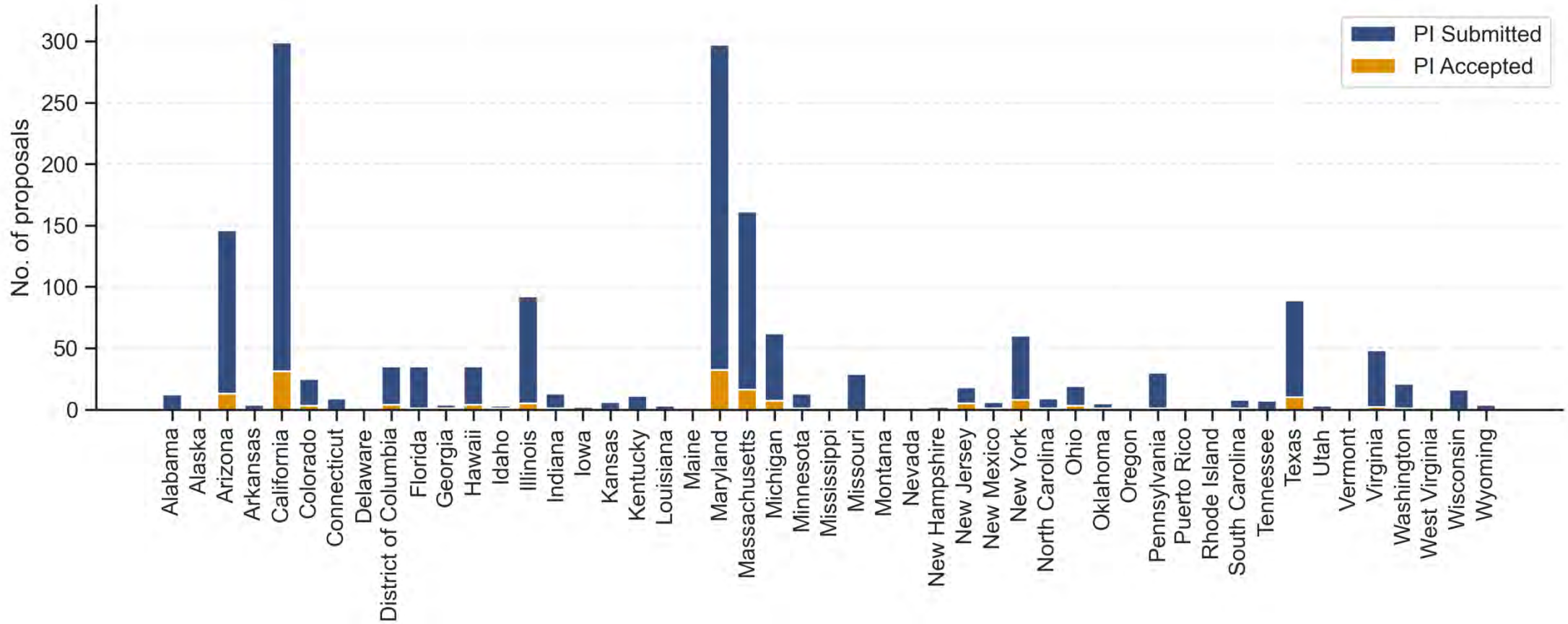


Countries of PIs

Country	Submitted	Approved	Country	Submitted	Approved	Country	Submitted	Approved
Argentina	1		Hong Kong	2		Slovenia	6	1
Australia	28	4	Hungary	7		South Korea	10	
Austria	19		India	19	3	Spain	72	6
Belgium	11		Iran	1		Sweden	34	4
Brazil	6		Ireland	18		Switzerland	38	4
Canada	105	10	Israel	5	2	Taiwan	11	2
Chile	27	1	Italy	130	5	Thailand	3	
China	56	9	Japan	87	6	The Netherlands	58	7
Denmark	30	3	Mexico	1		Türkiye	1	
Finland	3		Norway	1		United Kingdom	217	20
France	75	7	Poland	2		United States	1639	153
Germany	125	13	Portugal	4				
Greece	4		Russia	1				
			CSA Proposals	107	10	ESA Proposals	869	69



US States of PIs





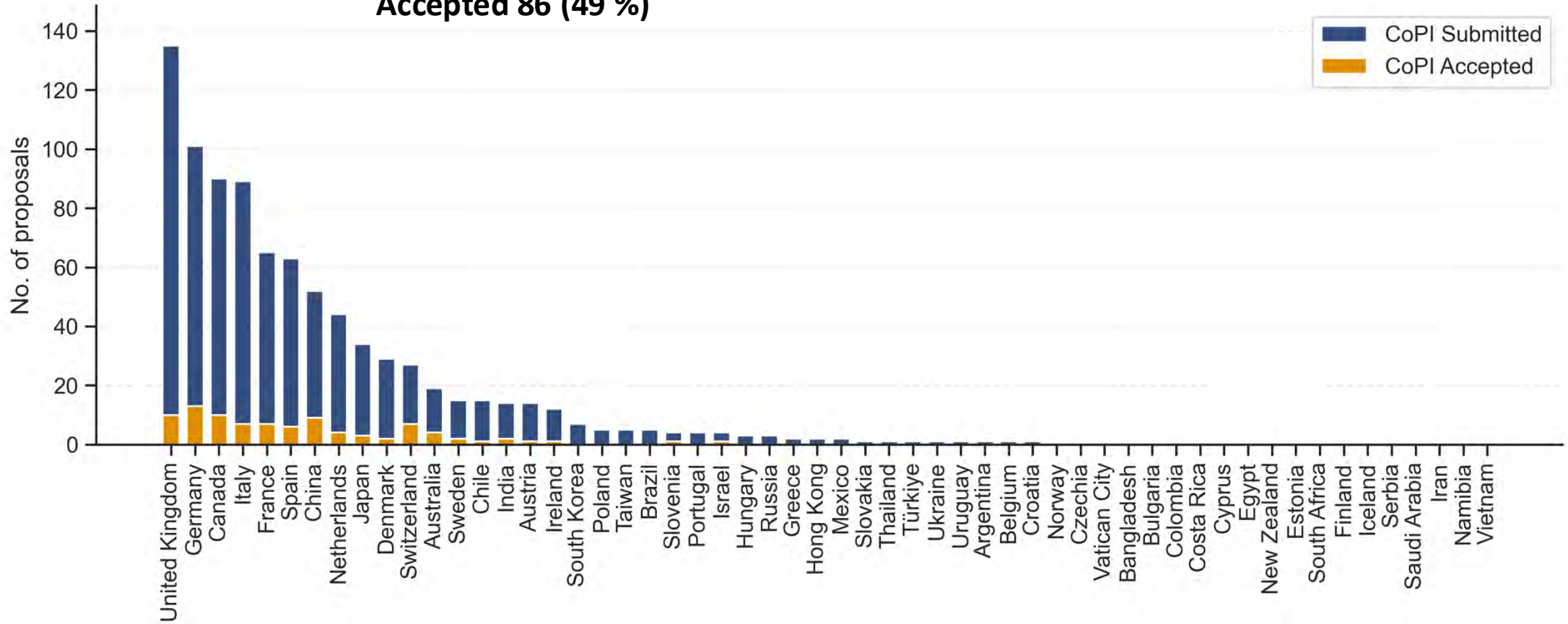
US States by PIs

State	Submitted	Approved	State	Submitted	Approved	State	Submitted	Approved
Alabama	12		Iowa	2		New York	60	8
Arizona	146	13	Kansas	6		North Carolina	9	1
Arkansas	4		Kentucky	11		Ohio	19	3
California	299	31	Louisiana	3		Oklahoma	5	1
Colorado	25	3	Maine	1		Oregon	1	
Connecticut	9		Maryland	297	32	Pennsylvania	30	1
Delaware	1		Massachusetts	161	16	South Carolina	8	1
District of Columbia	35	4	Michigan	62	7	Tennessee	7	
Florida	35	1	Minnesota	13	1	Texas	89	10
Georgia	4	1	Missouri	29		Utah	3	
Hawaii	35	4	Montana	1		Virginia	48	2
Idaho	3	1	New Hampshire	2		Washington	21	1
Illinois	92	5	New Jersey	18	5	Wisconsin	16	
Indiana	13	1	New Mexico	6	1	Wyoming	4	



Countries of CoPIs

USA CoPIs (not shown):
Submitted 985 (53 %)
Accepted 86 (49 %)



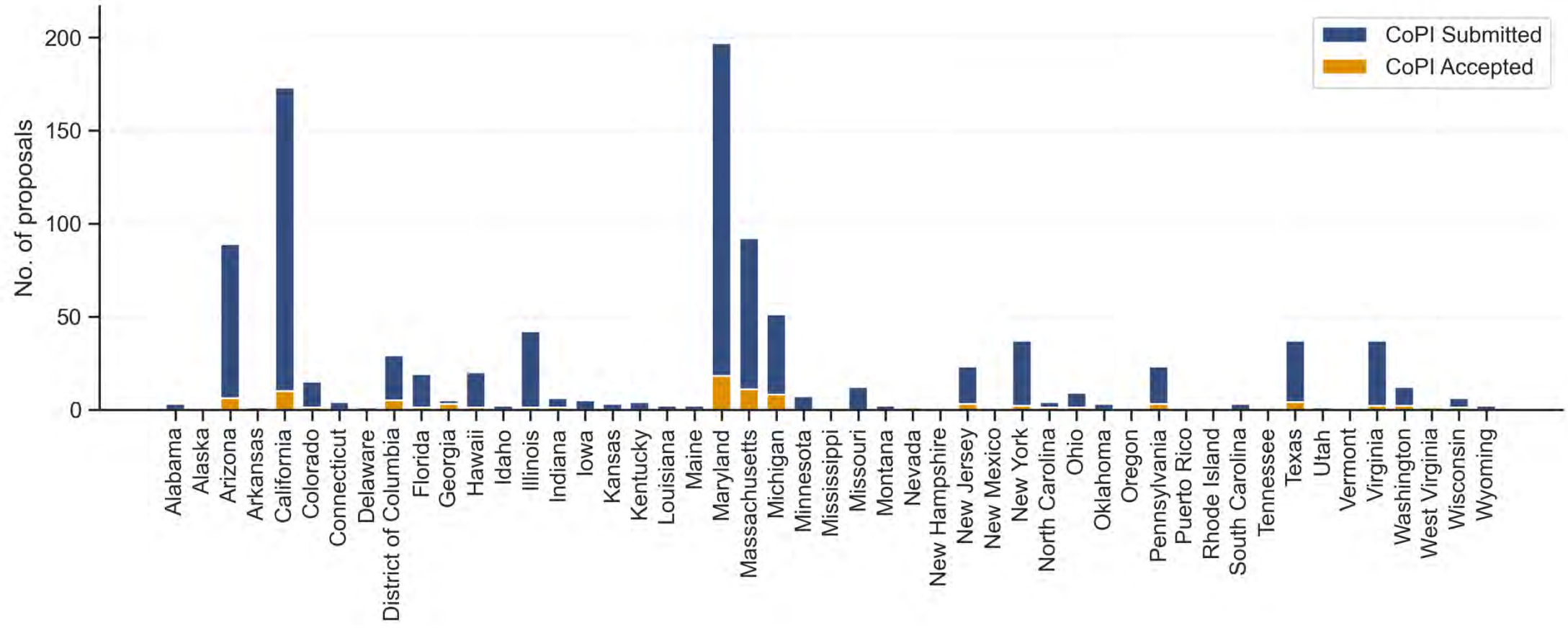


Countries by CoPIs

Country	Submitted	Approved	Country	Submitted	Approved	Country	Submitted	Approved
Argentina	1	4	Hong Kong	2		Slovenia	4	1
Australia	19		Hungary	3		South Korea	7	
Austria	14	1	India	14	2	Spain	63	6
Belgium	1		Iran			Sweden	15	2
Brazil	5		Ireland	12	1	Switzerland	27	7
Canada	90	10	Israel	4	1	The Netherlands	43	4
Chile	15	1	Italy	89	7	Taiwan	5	
China	52	9	Japan	34	3	Thailand	1	
Croatia	1		Mexico	2		Turkey	1	
Denmark	29	2	Poland	5		Ukraine	1	
France	65	7	Portugal	4		United Kingdom	137	10
Germany	100	13	Russia	3		United States	985	86
Greece	2		Slovakia	1		Uruguay	1	



US States of CoPIs





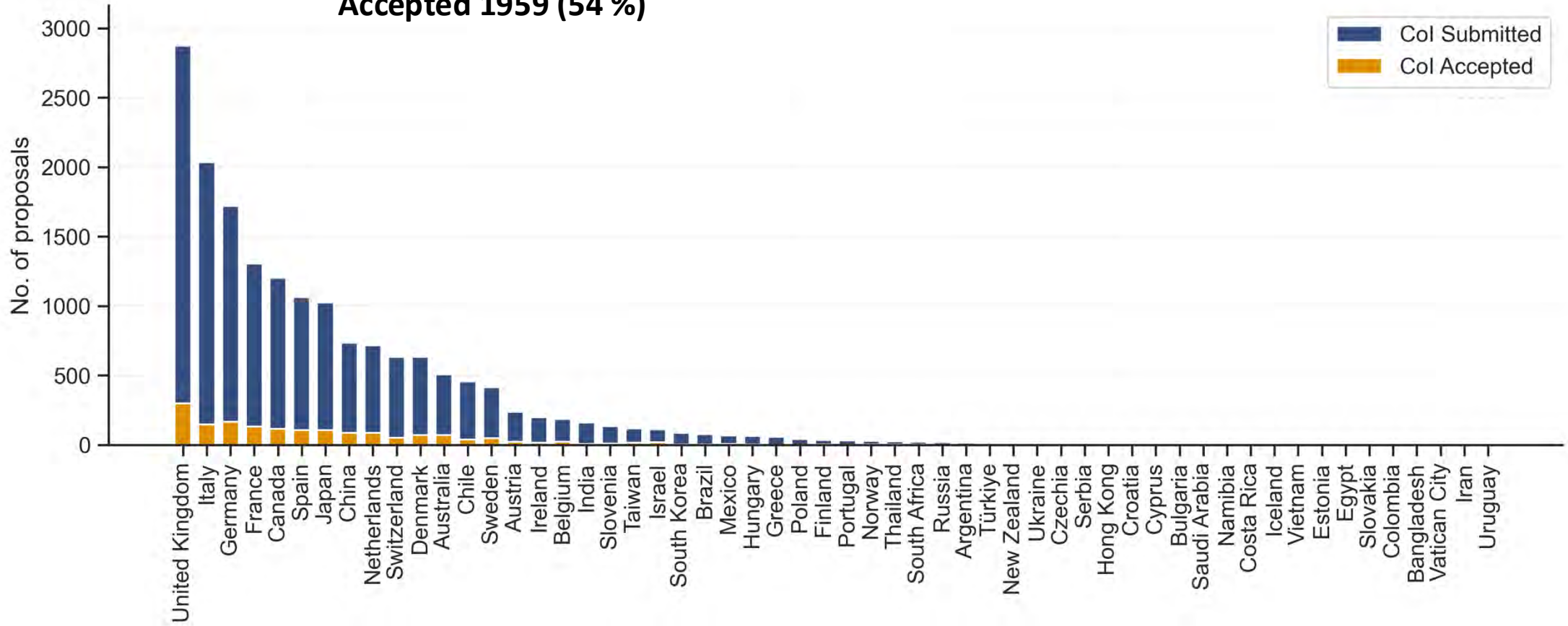
US States of CoPIs

State	Submitted	Approved	State	Submitted	Approved	State	Submitted	Approved
Alabama	3		Iowa	5		North Carolina	4	2
Arizona	89	6	Kansas	3		Ohio	9	1
Arkansas	1		Kentucky	4		Oklahoma	3	1
California	173	10	Louisiana	2		Pennsylvania	23	3
Colorado	15	1	Maine	2		South Carolina	3	
Connecticut	4		Maryland	197	18	Texas	37	4
Delaware	1		Massachusetts	93	11	Utah	1	
District of Columbia	29	5	Michigan	51	8	Virginia	37	2
Florida	19	1	Minnesota	7		Washington	12	2
Georgia	5	3	Missouri	12		West Virginia	2	1
Hawaii	20	1	Montana	2		Wisconsin	6	1
Idaho	2		Nevada	1	1	Wyoming	2	
Illinois	42	1	New Jersey	23	3			
Indiana	6	1	New York	37				



Countries of Cols

USA Cols (not shown):
Submitted 17261 (50 %)
Accepted 1959 (54 %)



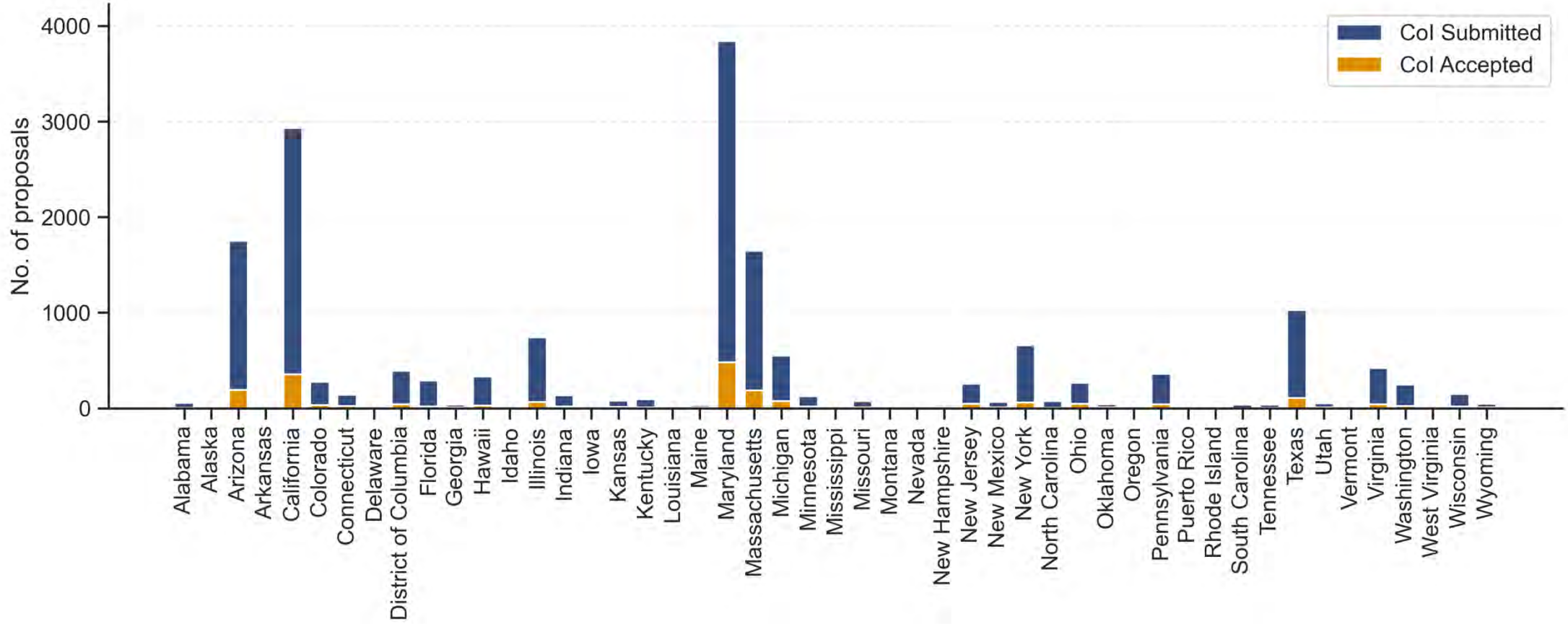


Countries of Cols

Country	Submitted	Approved	Country	Submitted	Approved	Country	Submitted	Approved
Argentina	17		France	1304	130	Serbia	8	1
Australia	508	70	Germany	1719	168	Slovakia	1	
Austria	236	22	Greece	56		Slovenia	136	9
Bangladesh	1		Hong Kong	7	2	South Africa	23	2
Belgium	185	22	Hungary	65	4	South Korea	85	3
Brazil	78	3	Iceland	2	1	Spain	1064	105
Bulgaria	4		India	161	7	Sweden	414	48
Canada	1203	115	Ireland	198	15	Switzerland	633	52
Chile	456	37	Israel	113	18	Taiwan	120	15
China	735	87	Italy	2034	149	Thailand	25	2
Columbia	1		Japan	1025	105	The Netherlands	717	88
Costa Rica	2		Mexico	66	5	The Vatican	1	
Croatia	5		Namibia	2		Turkey	11	
Cyprus	5		New Zealand	9	1	Ukraine	9	
Czech Republic	8	2	Norway	29	2	United Kingdom	2879	298
Denmark	632	71	Poland	42		United States	17261	1959
Egypt	1		Portugal	33	1	Vietnam	2	
Estonia	1		Russia	19	1			
Finland	36	4	Saudi Arabia	3				



US States by CoIs





US States by Cols

State	Submitted	Approved	State	Submitted	Approved	State	Submitted	Approved
Alabama	54	1	Kentucky	89	7	Oklahoma	42	5
Alaska	11	2	Louisiana	13	2	Oregon	1	
Arizona	1750	191	Maine	30	5	Pennsylvania	359	40
Arkansas	10	2	Maryland	3842	478	Puerto Rico	2	
California	2927	354	Massachusetts	1649	186	Rhode Island	11	1
Colorado	272	32	Michigan	549	72	South Carolina	37	
Connecticut	139	21	Minnesota	124	15	Tennessee	33	2
Delaware	15	1	Mississippi	3		Texas	1024	106
District of Columbia	388	38	Missouri	73	6	Utah	48	8
Florida	286	17	Montana	5		Vermont	3	1
Georgia	33	5	Nevada	8		Virginia	418	38
Hawaii	328	25	New Hampshire	24	5	Washington	244	22
Idaho	9	3	New Jersey	253	43	West Virginia	4	
Illinois	742	65	New Mexico	64	8	Wisconsin	149	16
Indiana	135	18	New York	655	60	Wyoming	43	6
Iowa	21	2	North Carolina	74	3			
Kansas	76	10	Ohio	262	43			



Canadian (CSA) Provinces and Territories

	PIs		CoPIs		Cols	
Territory	Submitted	Approved	Submitted	Approved	Submitted	Approved
Alberta	5	1	2	1	40	4
British Columbia	16	2	21	3	179	20
Manitoba	2	1	3	2	10	1
Nova Scotia	2	0	3	1	47	4
Ontario	46	4	36	1	631	60
Quebec	34	2	25	2	295	26
Saskatchewan					1	0



ESA Countries

* Associate Members and European Cooperating Countries

PIs		CoPIs		Cols		Country	PIs		CoPIs		Cols		
Submitted	Approved	Submitted	Approved	Submitted	Approved		Submitted	Approved	Submitted	Approved	Submitted	Approved	
Austria	19	0	14	1	236	22	Norway	1	0			29	2
Belgium	11	0	1	0	184	22	Poland	2	0	5		42	
Czech Republic					8	2	Portugal	4	0	4	0	33	1
Denmark	30	2	29	2	632	71	Slovenia	6	1	4	1	136	9
Estonia					1	0	Spain	72	6	63	6	1064	105
Finland	3				36	4	Sweden	34	4	15	2	414	48
France	75	7	65	7	1304	130	Switzerland	38	4	27	7	633	52
Germany	125	13	100	13	1719	168	United Kingdom	217	20	137	10	2879	298
Greece	4		2		56		<i>Slovakia*</i>			1	0	1	0
Hungary	7	0	3	0	65	4	<i>Bulgaria*</i>					4	0
Ireland	18	0	12	1	198	15	<i>Croatia*</i>			1	0	5	0
Italy	130	5	89	7	2034	149	<i>Cyprus*</i>					5	0
Netherlands	58	7	43	4	717	88							



Investigators Summary

Proposers	Submitted	Accepted	Proposers	Submitted	Accepted
PIs	2,857	254	ESA PIs	870	69
Unique PIs	1,891	238	ESA CoIs	12,716	1,227
Unique PI Institutions	415	124	ESA CoPIs	631	62
Countries	57	37	ESA Unique	2,854	835
US States and Territories	49	45	CSA PIs	107	10
CoIs	34,387	3,624	CSA CoIs	1,230	117
Unique CoIs	7,020	2,177	CSA CoPIs	90	10
Total CoPIs	1,856	177	CSA Unique	249	81
Total Investigators	39,100	4055			
Unique Investigators	7,369	2333			
Unique Institutions	850	458			