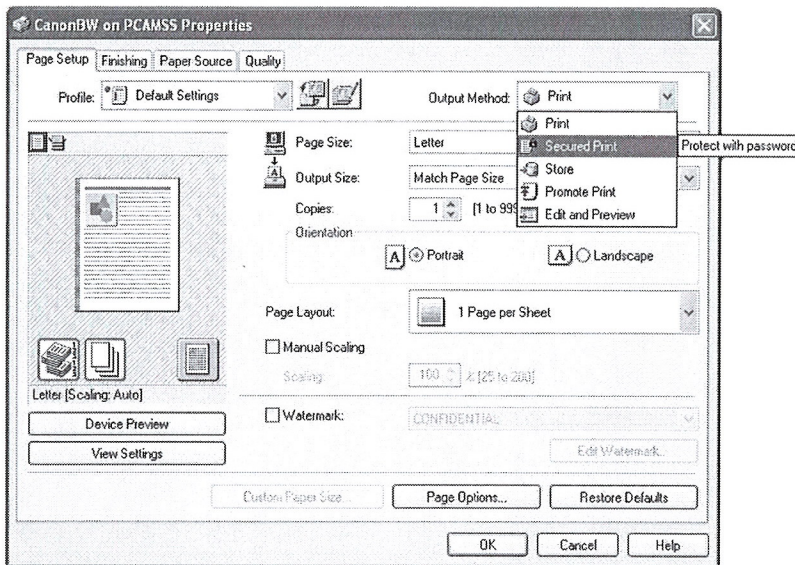




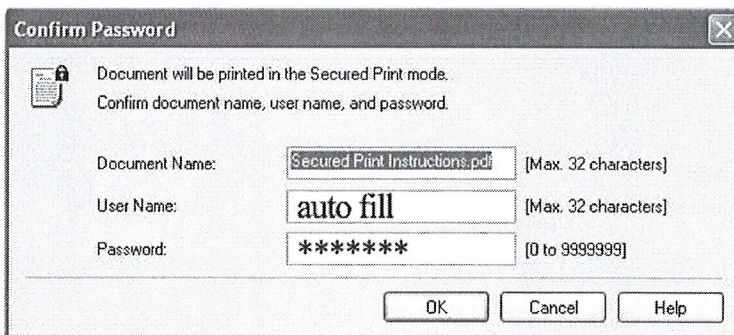
CANON BUSINESS SOLUTIONS

HOW TO PRINT USING SECURE PRINT

1. Select File->Print from your application
2. Select Properties from the printing dialogue window
3. In the Output Method select 'Secured Print'.

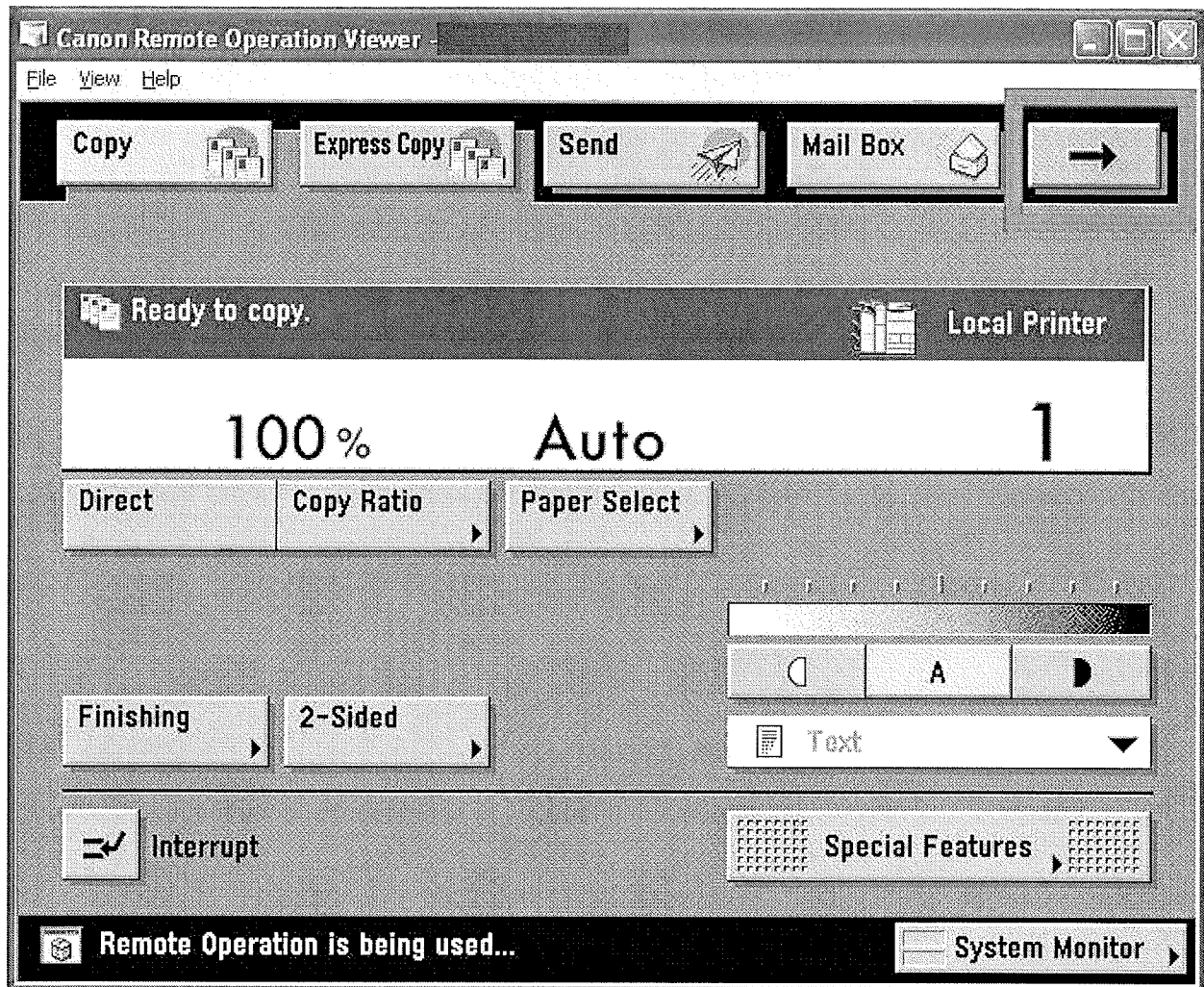


4. Choose your finishing options and when you are finished choose print. You will be prompted to enter a numeric password. (***) You will need this at the device to complete your print job.)

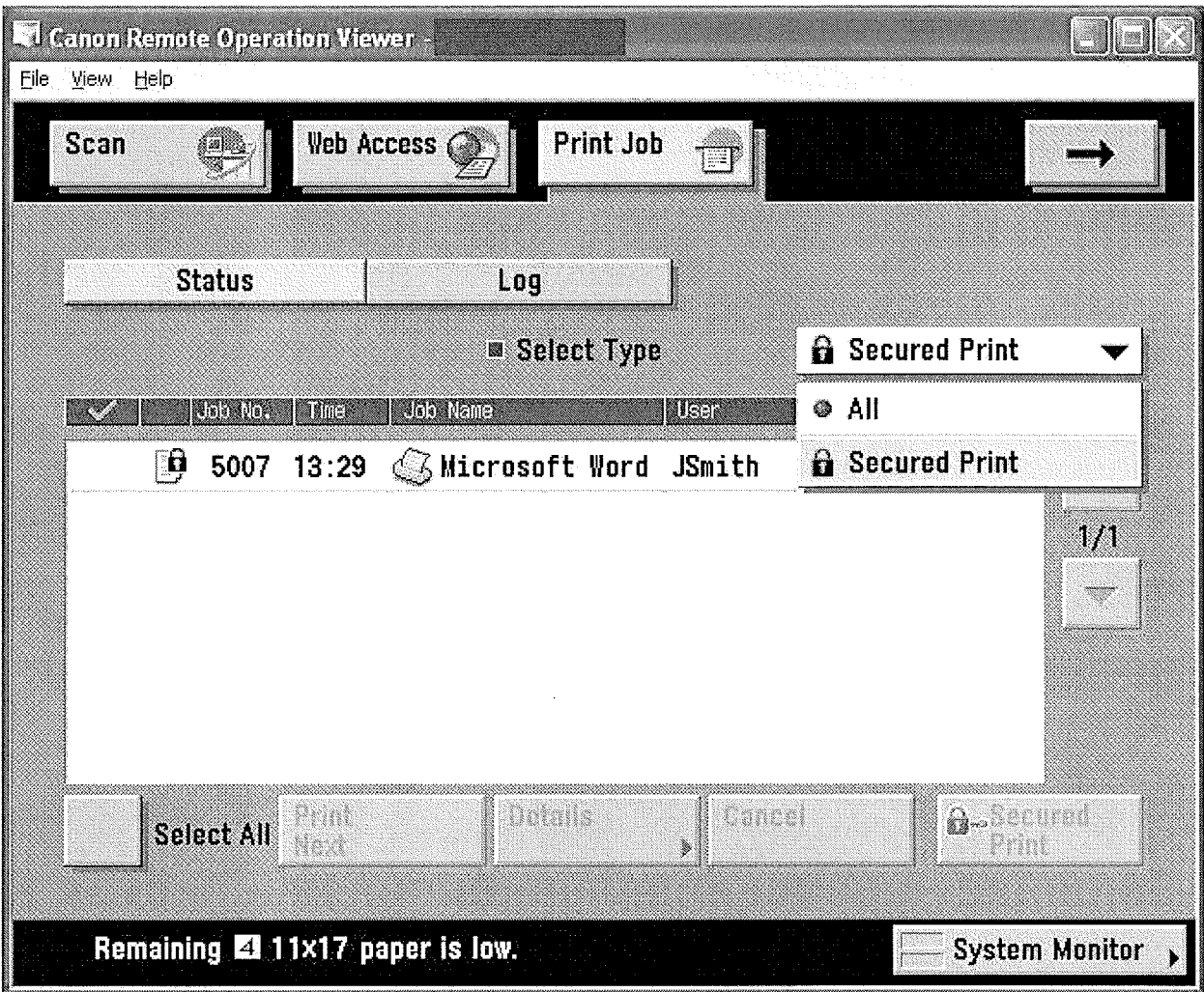


Now that you have sent your document to the printer you must walk up to the device and enter the password in order for it to be printed. This is where the procedure is slightly different from earlier imageRUNNERS. On previous models you would select 'System Monitor' on the device then go into Print->Status to release the secured print job. Below are the steps to release the job on these models:

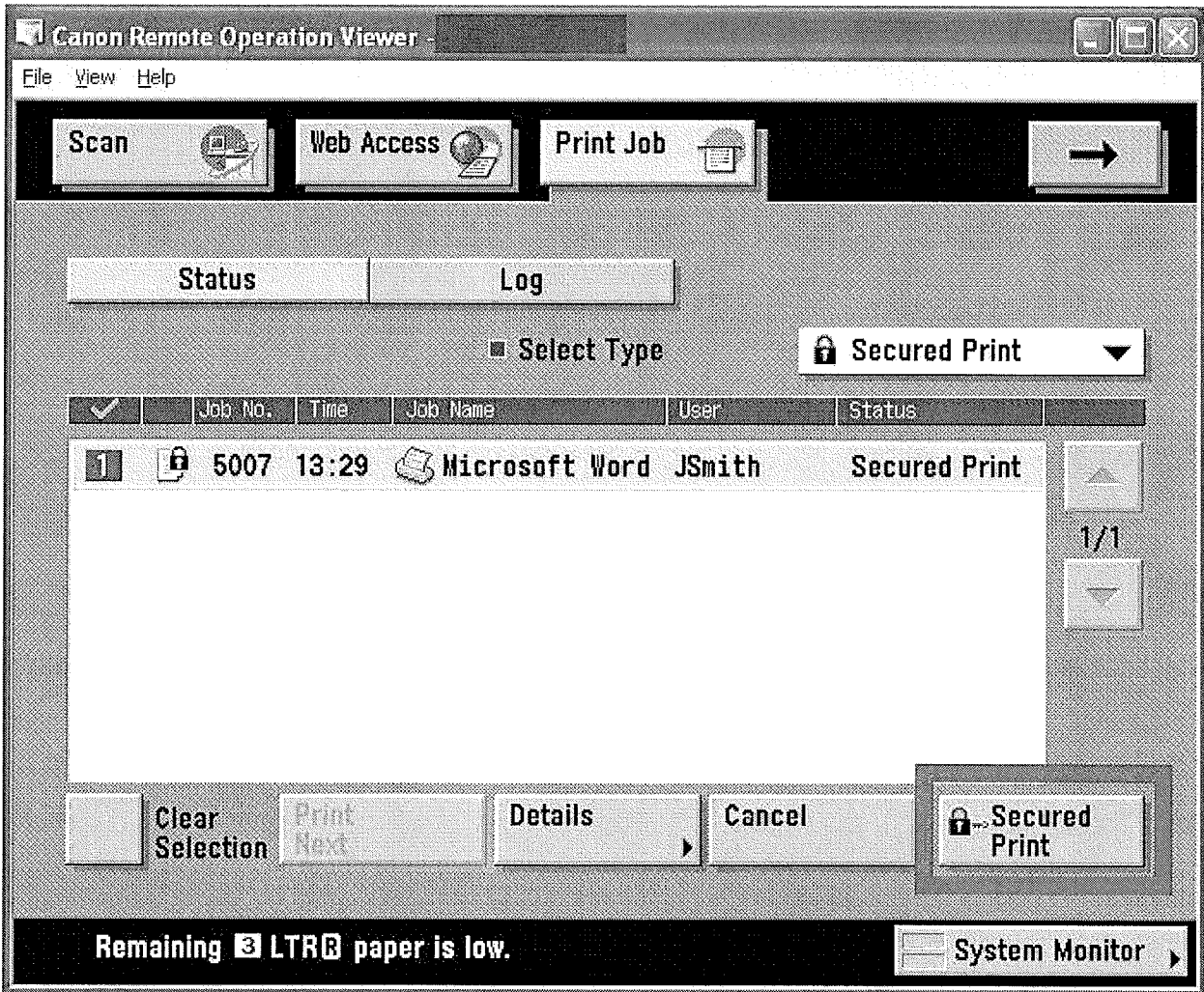
1. Walk up to the device and press the right arrow button:



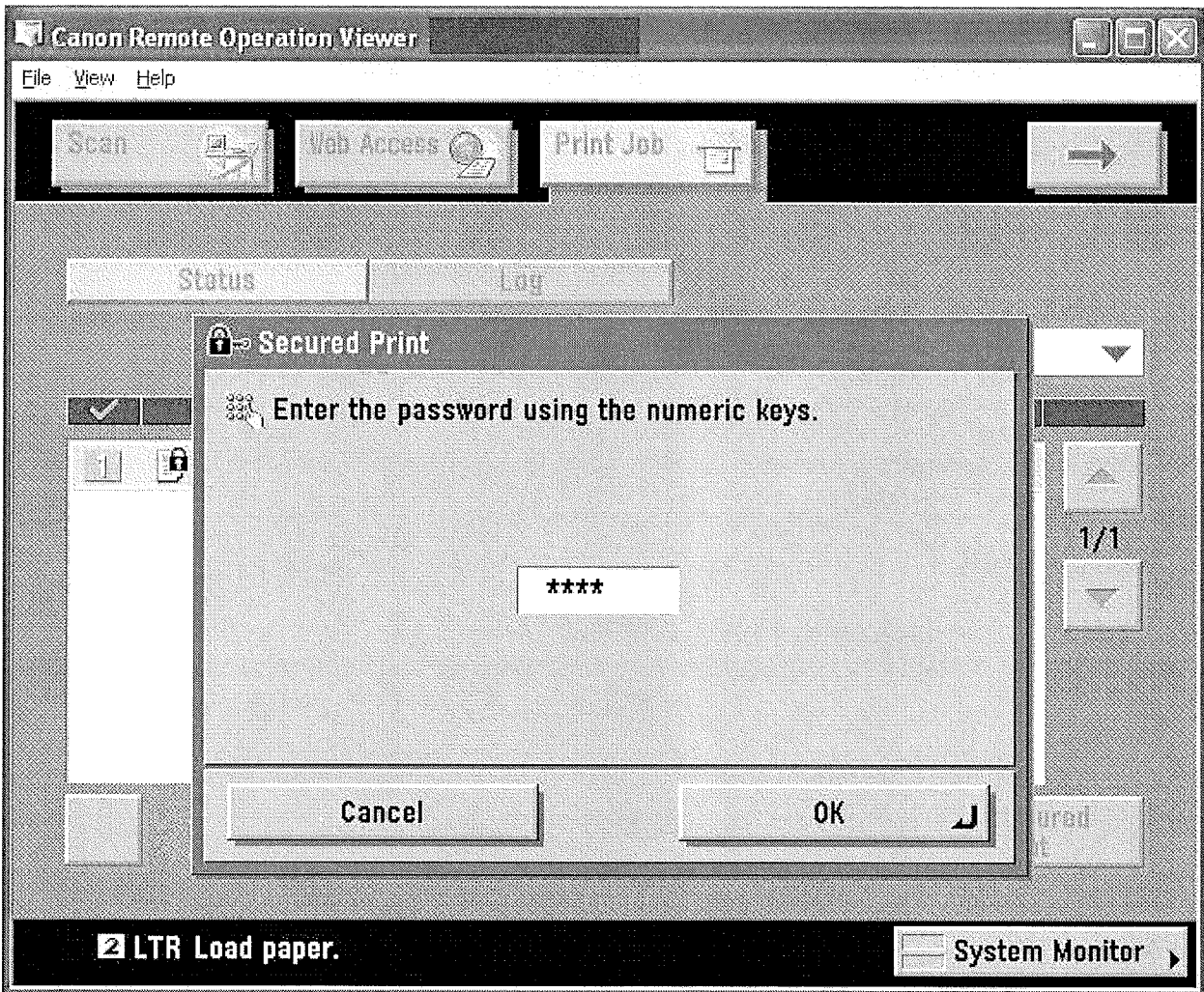
2. There is a new button called 'Print Job'. Select this tab and under 'Select Type' choose 'Secured Print'



3. Highlight the job that you sent using secured print and push the 'Secured Print' button at the bottom of the screen



4. Enter the correct password that you gave when you originally printed the job from your PC



Canon USA, Inc. Systems & Technical Support Division 1-800-528-2830

Article # : 61953

Reviewed : 2/11/2008

Category : Knowledgebase > National Accounts Knowledge Base > imageRUNNER Series (Color)
 Knowledgebase > National Accounts Knowledge Base > imageRUNNER Series (B/W) > imageRUNNER-iR (Canon Controllers)
 Knowledgebase > imageRUNNER Series (B/W) > Connectivity / Software Solutions
 Knowledgebase > imageRUNNER Series (Color) > Connectivity / Software Solutions
 Knowledgebase > imagePRESS Series > imagePRESS C1 > Connectivity / Software Solutions
 Knowledgebase > National Accounts Knowledge Base > imagePRESS Series
 Knowledgebase > imagePRESS Series > imagePRESS C7000VP > Connectivity / Software Solutions