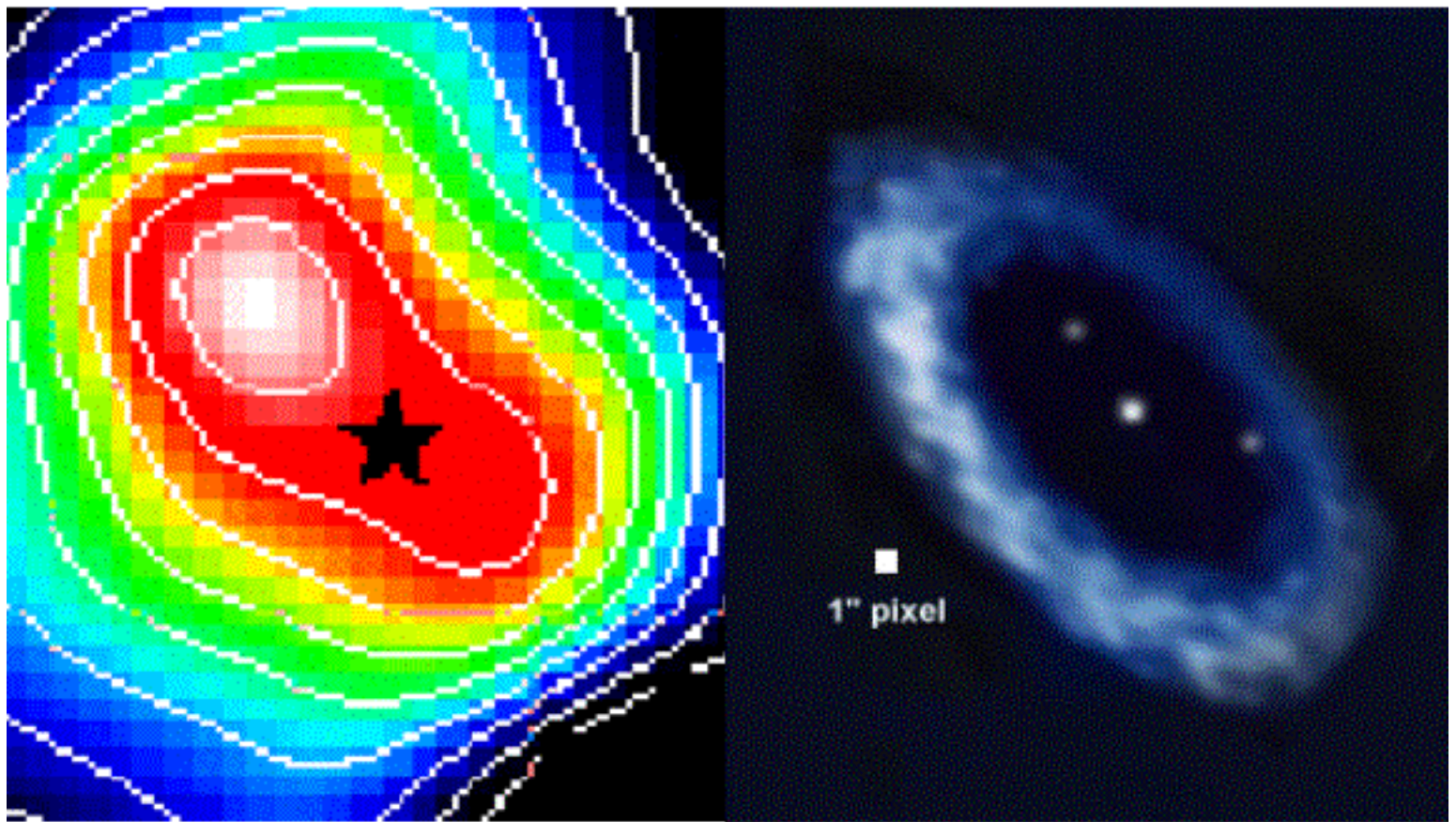


**Figure 9**

**Figure 9.** The Vega Planetary System. To the left is the best available image of the debris system (Holland et al. 1998), obtained at 850  $\mu\text{m}$  with SCUBA bolometer array (the black star is the position of Vega itself). To the right is an artist's concept of how the system might look to a 10-m telescope operating at 50  $\mu\text{m}$ . In addition to the debris ring, two giant planets ( $\sim$  Jupiter mass) are indicated to suggest the possibility of probing their relationship to the structure of the debris system.