

## Figure 2

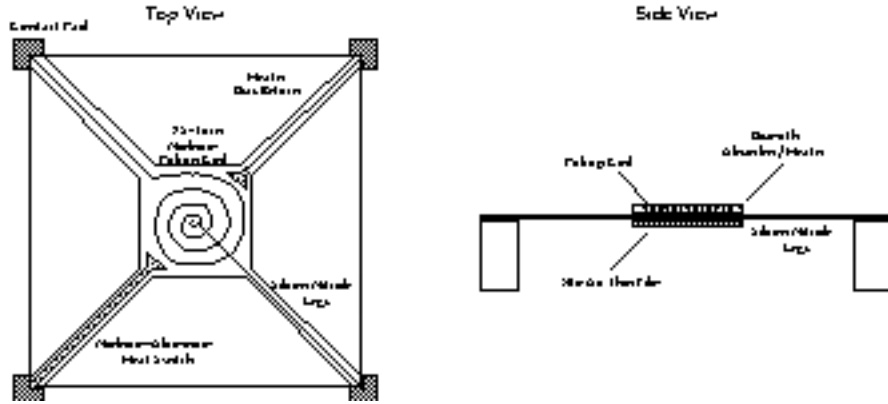


Fig 2: Design for prototype chip built at GSFC. The pickup coil and superconducting film are deposited on opposite sides of a silicon nitride membrane suspended by four legs. The niobium-aluminum heat switch occupies one leg, leads for the pickup coil are on two other legs, while the fourth leg provides a return for the heater current passed through the heat switch leads and bismuth absorber.