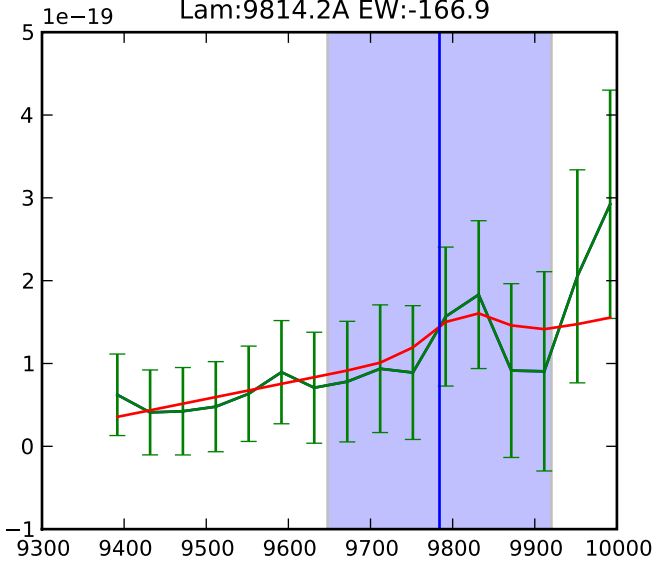
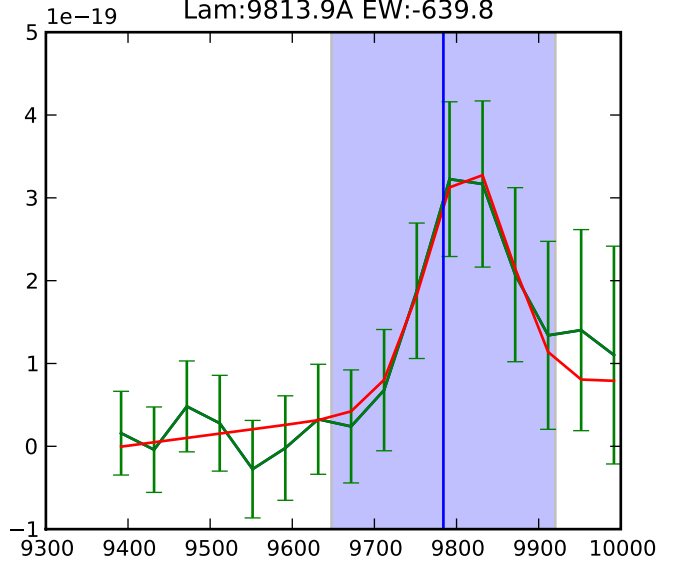


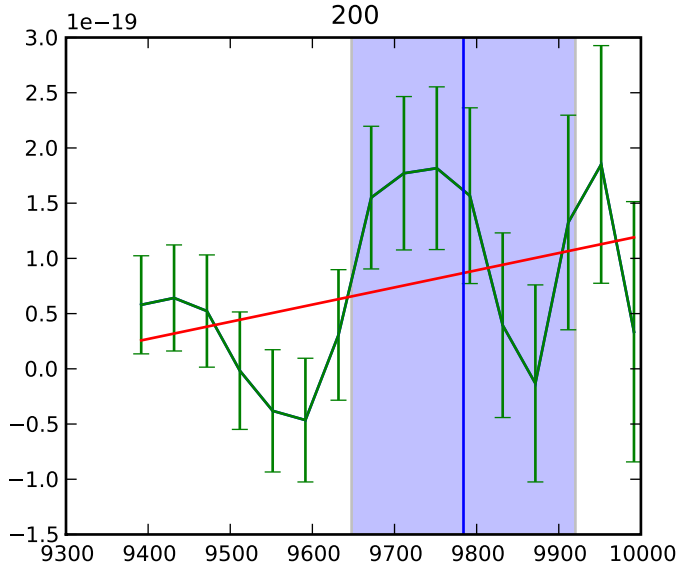
PA:085 flux:4.1e-18 F: 40.0A
Lam:9814.2A EW:-166.9



PA:095 flux:3.7e-17 F: 51.0A
Lam:9813.9A EW:-639.8



200



PAs: ['085', '095']

Fluxes: Avg: 2.039e-17 +/- 2.304e-17 erg/s(2)

FWHMs : Avg: 45.505 +/- 7.785 (2)

Lams : Avg: 9814.056 +/- 0.193 (2)

EWs : Avg: -403.317e +/- 334.382 (2)

Chi2s : Avg: 2.172e +/- 0.257 (2)